

Product datasheet for **TA377812**

KIFC1 Rabbit Polyclonal Antibody

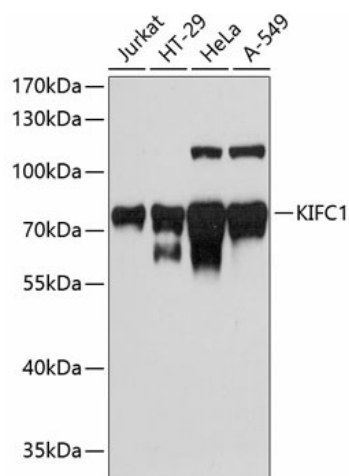
Product data:

Product Type:	Primary Antibodies
Applications:	ICC/IF, IHC, WB
Recommended Dilution:	WB,1:500 - 1:2000 IHC,1:50 - 1:100 IF,1:50 - 1:100
Reactivity:	Human, Mouse, Rat
Modifications:	Unmodified
Host:	Rabbit
Isotype:	IgG
Clonality:	Polyclonal
Immunogen:	Recombinant fusion protein containing a sequence corresponding to amino acids 1-250 of human KIFC1 (NP_002254.2).
Formulation:	Buffer: PBS with 0.02% sodium azide,50% glycerol,pH7.3.
Concentration:	lot specific
Purification:	Affinity purification
Conjugation:	Unconjugated
Storage:	Store at -20°C. Avoid freeze / thaw cycles.
Stability:	Shelf life: one year from despatch.
Predicted Protein Size:	73kDa
Gene Name:	kinesin family member C1
Database Link:	Entrez Gene 3833 Human Q9BW19
Background:	Minus end-directed microtubule-dependent motor required for bipolar spindle formation. May contribute to movement of early endocytic vesicles (By similarity. Regulates cilium formation and structure (By similarity.
Synonyms:	HSET; KNSL2; MGC1202; MGC149736; MGC149737

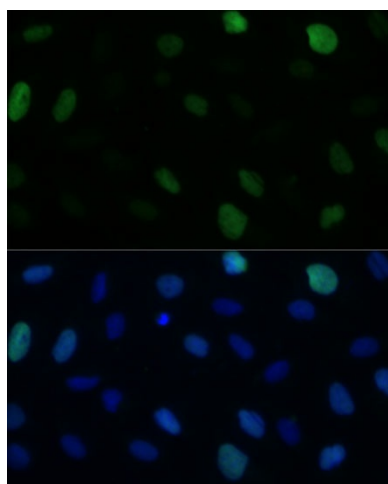


[View online »](#)

Product images:



Western blot analysis of extracts of various cell lines, using KIFC1 antibody (TA377812) at 1:3000 dilution. | Secondary antibody: HRP Goat Anti-Rabbit IgG (H+L) at 1:10000 dilution. | Lysates/proteins: 25ug per lane. | Blocking buffer: 3% nonfat dry milk in TBST. | Detection: ECL Basic Kit . | Exposure time: 90s.



Immunofluorescence analysis of U-2 OS cells using KIFC1 Polyclonal Antibody (TA377812) at dilution of 1:100 (40x lens). Blue: DAPI for nuclear staining.