

## Product datasheet for **TA377811**

### KIFAP3 Rabbit Polyclonal Antibody

#### Product data:

Product Type:	Primary Antibodies
Applications:	ICC/IF, IP, WB
Recommended Dilution:	WB,1:500 - 1:2000 IF,1:50 - 1:200 IP,1:50 - 1:100
Reactivity:	Human, Mouse, Rat
Modifications:	Unmodified
Host:	Rabbit
Isotype:	IgG
Clonality:	Polyclonal
Immunogen:	Recombinant fusion protein containing a sequence corresponding to amino acids 1-200 of human KIFAP3 (NP_055785.2).
Formulation:	Buffer: PBS with 0.02% sodium azide,50% glycerol,pH7.3.
Concentration:	lot specific
Purification:	Affinity purification
Conjugation:	Unconjugated
Storage:	Store at -20°C. Avoid freeze / thaw cycles.
Stability:	Shelf life: one year from despatch.
Predicted Protein Size:	82kDa/86kDa/91kDa
Gene Name:	kinesin associated protein 3
Database Link:	<a href="#">Entrez Gene 22920 Human Q92845</a>



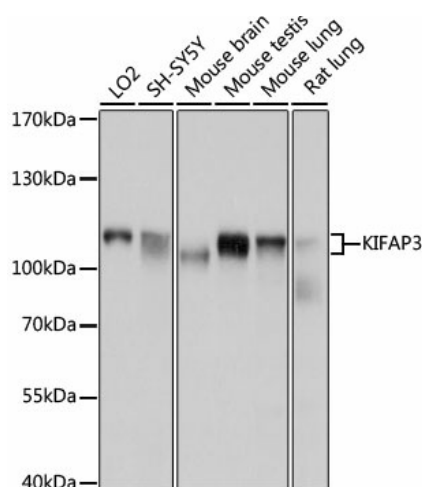
[View online »](#)

**Background:**

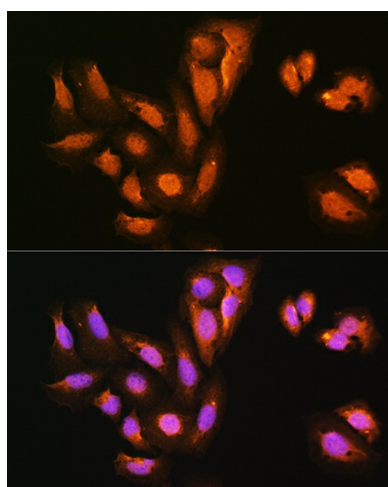
The small G protein GDP dissociation stimulator (smg GDS) is a regulator protein having two activities on a group of small G proteins including the Rho and Rap1 family members and Ki-Ras; one is to stimulate their GDP/GTP exchange reactions, and the other is to inhibit their interactions with membranes. The protein encoded by this gene contains 9 'Armadillo' repeats and interacts with the smg GDS protein through these repeats. This protein, which is highly concentrated around the endoplasmic reticulum, is phosphorylated by v-src, and this phosphorylation reduces the affinity of the protein for smg GDS. It is thought that this protein serves as a linker between human chromosome-associated polypeptide (HCAP) and KIF3A/B, a kinesin superfamily protein in the nucleus, and that it plays a role in the interaction of chromosomes with an ATPase motor protein. Several transcript variants encoding different isoforms have been found for this gene.

**Synonyms:**

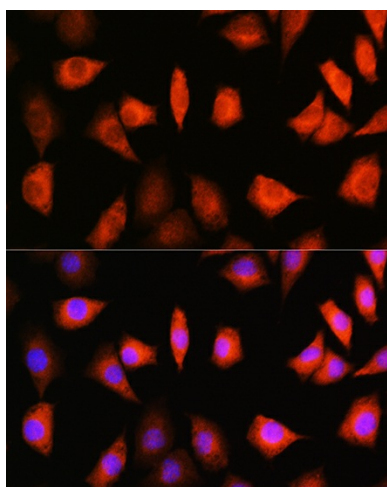
dj190116.1; FLJ22818; KAP3; KIF3AP; SMAP; Smg-GDS

**Product images:**


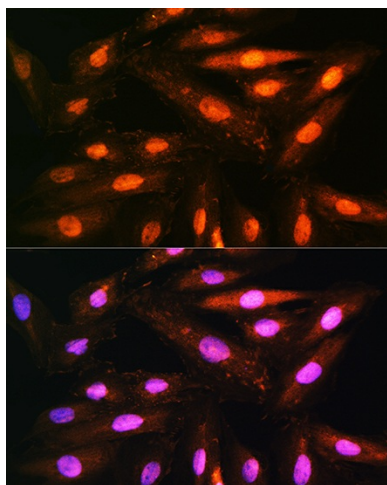
Western blot analysis of extracts of various cell lines, using KIFAP3 antibody (TA377811) at 1:1000 dilution. | Secondary antibody: HRP Goat Anti-Rabbit IgG (H+L) at 1:10000 dilution. | Lysates/proteins: 25ug per lane. | Blocking buffer: 3% nonfat dry milk in TBST. | Detection: ECL Basic Kit . | Exposure time: 5s.



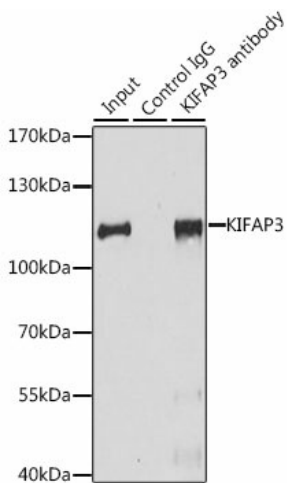
Immunofluorescence analysis of U2OS cells using KIFAP3 Rabbit pAb (TA377811) at dilution of 1:100. Blue: DAPI for nuclear staining.



Immunofluorescence analysis of L929 cells using KIFAP3 Rabbit pAb (TA377811) at dilution of 1:100. Blue: DAPI for nuclear staining.



Immunofluorescence analysis of H9C2 cells using KIFAP3 Rabbit pAb (TA377811) at dilution of 1:100. Blue: DAPI for nuclear staining.



Immunoprecipitation analysis of 200ug extracts of HeLa cells, using 3 ug KIFAP3 antibody (TA377811). Western blot was performed from the immunoprecipitate using KIFAP3 antibody (TA377811) at a dilution of 1:1000.