

Product datasheet for **TA377806**

KIF4A Rabbit Polyclonal Antibody

Product data:

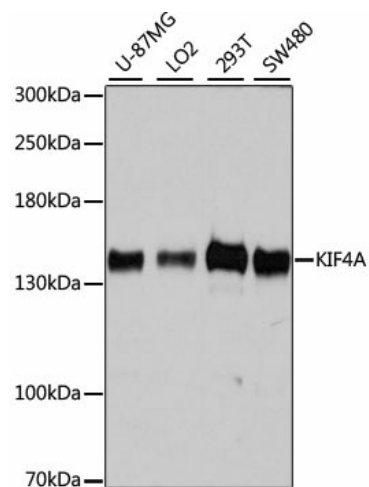
Product Type:	Primary Antibodies
Applications:	ICC/IF, IHC, WB
Recommended Dilution:	WB,1:1000 - 1:3000 IHC,1:50 - 1:200 IF,1:100 - 1:200
Reactivity:	Human, Mouse, Rat
Modifications:	Unmodified
Host:	Rabbit
Isotype:	IgG
Clonality:	Polyclonal
Immunogen:	Recombinant fusion protein containing a sequence corresponding to amino acids 870-1080 of human KIF4A (NP_036442.3).
Formulation:	Buffer: PBS with 0.02% sodium azide,50% glycerol,pH7.3.
Concentration:	lot specific
Purification:	Affinity purification
Conjugation:	Unconjugated
Storage:	Store at -20°C. Avoid freeze / thaw cycles.
Stability:	Shelf life: one year from despatch.
Predicted Protein Size:	128kDa/139kDa
Gene Name:	kinesin family member 4A
Database Link:	Entrez Gene 24137 Human O95239
Background:	This gene encodes a member of the kinesin 4 subfamily of kinesin related proteins. The encoded protein is an ATP dependent microtubule-based motor protein that is involved in the intracellular transport of membranous organelles. This protein also associates with condensed chromosome arms and may be involved in maintaining chromosome integrity during mitosis. This protein may also be involved in the organization of the central spindle prior to cytokinesis. A pseudogene of this gene is found on chromosome X.



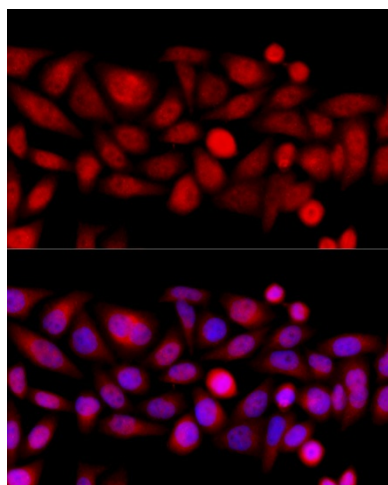
[View online »](#)

Synonyms: chromokinesin; Chromokinesin-A; FLJ12530; FLJ12655; FLJ14204; FLJ20631; HSA271784; KIF4; KIF4-G1

Product images:



Western blot analysis of extracts of various cell lines, using KIF4A antibody (TA377806) at 1:7000 dilution. | Secondary antibody: HRP Goat Anti-Rabbit IgG (H+L) at 1:10000 dilution. | Lysates/proteins: 25ug per lane. | Blocking buffer: 3% nonfat dry milk in TBST. | Detection: ECL Basic Kit . | Exposure time: 10s.



Immunofluorescence analysis of HeLa cells using KIF4A antibody (TA377806) at dilution of 1:100 (40x lens). Blue: DAPI for nuclear staining.