

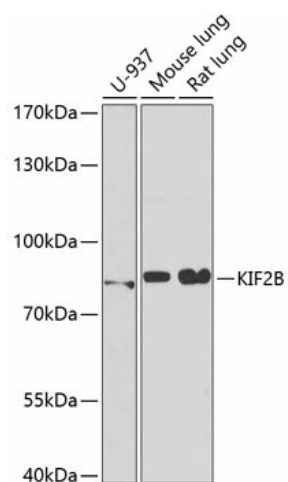
Product datasheet for **TA377803S**

KIF2B Rabbit Polyclonal Antibody

Product data:

Product Type:	Primary Antibodies
Applications:	ELISA, WB
Recommended Dilution:	WB, 1:500 - 1:1000 ELISA, Recommended starting concentration is 1 µg/mL. Please optimize the concentration based on your specific assay requirements.
Reactivity:	Human, Mouse, Rat
Modifications:	Unmodified
Host:	Rabbit
Isotype:	IgG
Clonality:	Polyclonal
Formulation:	Buffer: PBS with 0.02% sodium azide, 50% glycerol, pH 7.3.
Concentration:	lot specific
Purification:	Affinity purification
Conjugation:	Unconjugated
Storage:	Store at -20°C. Avoid freeze / thaw cycles.
Stability:	Shelf life: one year from despatch.
Predicted Protein Size:	76kDa
Gene Name:	kinesin family member 2B
Database Link:	Entrez Gene 84643 Human Q8N4N8
Background:	Predicted to enable microtubule binding activity and microtubule motor activity. Involved in metaphase plate congression; microtubule depolymerization; and regulation of chromosome segregation. Located in intercellular bridge; mitotic spindle; and nucleolus.
Synonyms:	FLJ53902

[View online »](#)

Product images:


Western blot analysis of various lysates