

## Product datasheet for **TA377800S**

### KIF21A Rabbit Polyclonal Antibody

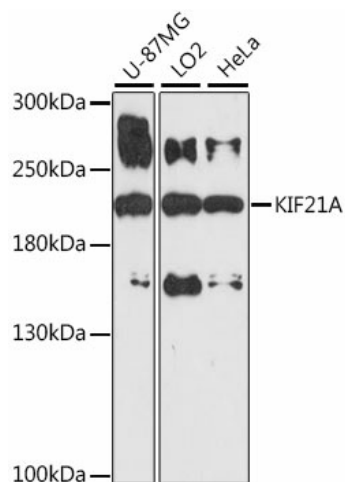
#### Product data:

Product Type:	Primary Antibodies
Applications:	ICC/IF, WB
Recommended Dilution:	WB, 1:500 - 1:2000 IF, 1:50 - 1:200
Reactivity:	Human, Mouse
Modifications:	Unmodified
Host:	Rabbit
Isotype:	IgG
Clonality:	Polyclonal
Immunogen:	Recombinant fusion protein containing a sequence corresponding to amino acids 1070-1270 of human KIF21A (NP_001166935.1).
Formulation:	Buffer: PBS with 0.02% sodium azide, 50% glycerol, pH 7.3.
Concentration:	lot specific
Purification:	Affinity purification
Conjugation:	Unconjugated
Storage:	Store at -20°C. Avoid freeze / thaw cycles.
Stability:	Shelf life: one year from despatch.
Predicted Protein Size:	180kDa/182kDa/185kDa/187kDa
Gene Name:	kinesin family member 21A
Database Link:	<a href="#">Entrez Gene 55605 Human Q7Z4S6</a>
Background:	This gene encodes a member of the KIF4 subfamily of kinesin-like motor proteins. The encoded protein is characterized by an N-terminal motor domain a coiled-coil stalk domain and a C-terminal WD-40 repeat domain. This protein may be involved in microtubule dependent transport. Mutations in this gene are the cause of congenital fibrosis of extraocular muscles-1. Alternate splicing results in multiple transcript variants.
Synonyms:	CFEOM; CFEOM1; DKFZp779C159; FEOM; FEOM1; FLJ20052; KIAA1708; KIF2

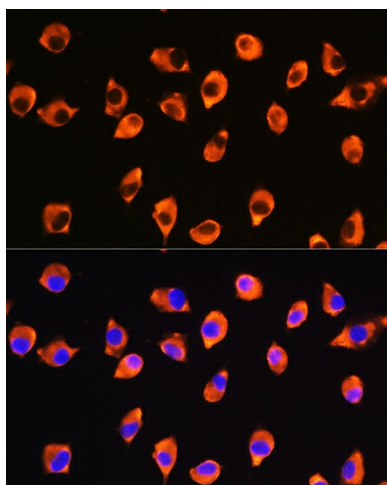


[View online »](#)

## Product images:



Western blot analysis of extracts of various cell lines, using KIF21A antibody ([TA377800]) at 1:1000 dilution. | Secondary antibody: HRP Goat Anti-Rabbit IgG (H+L) at 1:10000 dilution. | Lysates/proteins: 25ug per lane. | Blocking buffer: 3% nonfat dry milk in TBST. | Detection: ECL Basic Kit. | Exposure time: 3min.



Immunofluorescence analysis of L929 cells using KIF21A Rabbit pAb ([TA377800]) at dilution of 1:100. Blue: DAPI for nuclear staining.