

## Product datasheet for **TA377795**

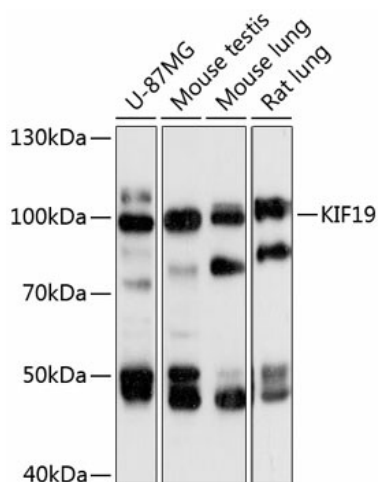
### KIF19 Rabbit Polyclonal Antibody

#### Product data:

Product Type:	Primary Antibodies
Applications:	ELISA, WB
Recommended Dilution:	WB, 1:500 - 1:2000 ELISA, Recommended starting concentration is 1 µg/mL. Please optimize the concentration based on your specific assay requirements.
Reactivity:	Human, Mouse, Rat
Modifications:	Unmodified
Host:	Rabbit
Isotype:	IgG
Clonality:	Polyclonal
Formulation:	Buffer: PBS with 0.01% thimerosal, 50% glycerol, pH 7.3.
Concentration:	lot specific
Purification:	Affinity purification
Conjugation:	Unconjugated
Storage:	Store at -20°C. Avoid freeze / thaw cycles.
Stability:	Shelf life: one year from despatch.
Predicted Protein Size:	111kDa
Gene Name:	kinesin family member 19
Database Link:	<a href="#">Entrez Gene 124602 Human Q2TAC6</a>
Background:	Predicted to enable microtubule binding activity and plus-end-directed microtubule motor activity. Predicted to be involved in axonemal microtubule depolymerization; microtubule-based movement; and plus-end specific microtubule depolymerization. Predicted to be located in cilium. Predicted to be part of kinesin complex. Predicted to be active in microtubule.
Synonyms:	FLJ37300; KIF19A



[View online »](#)

**Product images:**

Western blot analysis of various lysates using KIF19 Rabbit pAb (TA377795) at 1:3000 dilution. Secondary antibody: HRP-conjugated Goat anti-Rabbit IgG (H+L) at 1:10000 dilution. Lysates/proteins: 25µg per lane. Blocking buffer: 3% nonfat dry milk in TBST. Detection: ECL Basic Kit. Exposure time: 10s.