

## Product datasheet for **TA377793S**

### KIF17 Rabbit Polyclonal Antibody

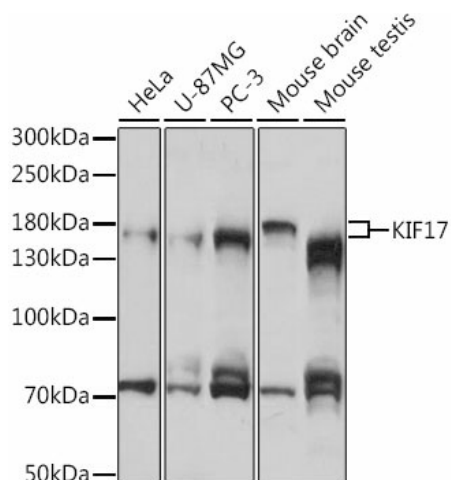
#### Product data:

Product Type:	Primary Antibodies
Applications:	ICC/IF, IHC, WB
Recommended Dilution:	WB,1:500 - 1:2000 IHC,1:50 - 1:200 IF,1:50 - 1:200
Reactivity:	Human, Mouse, Rat
Modifications:	Unmodified
Host:	Rabbit
Isotype:	IgG
Clonality:	Polyclonal
Immunogen:	Recombinant fusion protein containing a sequence corresponding to amino acids 360-660 of human KIF17 (NP_001116291).
Formulation:	Buffer: PBS with 0.02% sodium azide,50% glycerol,pH7.3.
Concentration:	lot specific
Purification:	Affinity purification
Conjugation:	Unconjugated
Storage:	Store at -20°C. Avoid freeze / thaw cycles.
Stability:	Shelf life: one year from despatch.
Predicted Protein Size:	114kDa/115kDa
Gene Name:	kinesin family member 17
Database Link:	<a href="#">Entrez Gene 57576 Human Q9P2E2</a>
Background:	Dendrite-specific motor protein which, in association with the Apba1-containing complex (LIN-10-LIN-2-LIN-7 complex, transports vesicles containing N-methyl-D-aspartate (NMDA receptor subunit NR2B along microtubules.
Synonyms:	KIAA1405; KIF3X; KIF17B

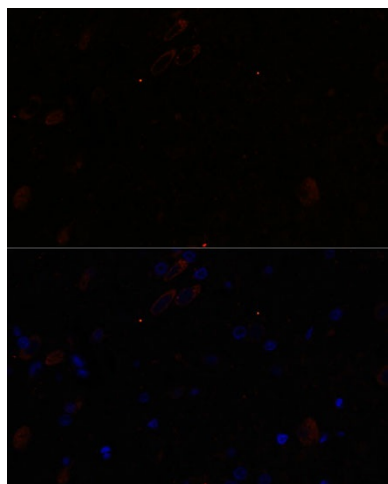


[View online »](#)

## Product images:



Western blot analysis of extracts of various cell lines, using KIF17 antibody ([TA377793]) at 1:1000 dilution. | Secondary antibody: HRP Goat Anti-Rabbit IgG (H+L) at 1:10000 dilution. | Lysates/proteins: 25ug per lane. | Blocking buffer: 3% nonfat dry milk in TBST. | Detection: ECL Basic Kit . | Exposure time: 30s.



Immunofluorescence analysis of rat brain using KIF17 antibody ([TA377793]) at dilution of 1:100. Blue: DAPI for nuclear staining.