

## Product datasheet for **TA377789**

### **Eg5 (KIF11) Rabbit Polyclonal Antibody**

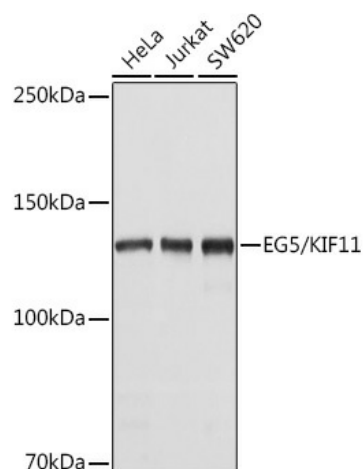
#### **Product data:**

<b>Product Type:</b>	Primary Antibodies
<b>Applications:</b>	ICC/IF, IP, WB
<b>Recommended Dilution:</b>	WB,1:500 - 1:2000 IF,1:50 - 1:100 IP,1:50 - 1:200
<b>Reactivity:</b>	Human
<b>Modifications:</b>	Unmodified
<b>Host:</b>	Rabbit
<b>Isotype:</b>	IgG
<b>Clonality:</b>	Polyclonal
<b>Immunogen:</b>	Recombinant fusion protein containing a sequence corresponding to amino acids 797-1056 of human EG5/EG5/KIF11 (NP_004514.2).
<b>Formulation:</b>	Buffer: PBS with 0.02% sodium azide,50% glycerol,pH7.3.
<b>Concentration:</b>	lot specific
<b>Purification:</b>	Affinity purification
<b>Conjugation:</b>	Unconjugated
<b>Storage:</b>	Store at -20°C. Avoid freeze / thaw cycles.
<b>Stability:</b>	Shelf life: one year from despatch.
<b>Predicted Protein Size:</b>	119kDa
<b>Gene Name:</b>	kinesin family member 11
<b>Database Link:</b>	<a href="#">Entrez Gene 3832 Human P52732</a>
<b>Background:</b>	This gene encodes a motor protein that belongs to the kinesin-like protein family. Members of this protein family are known to be involved in various kinds of spindle dynamics. The function of this gene product includes chromosome positioning, centrosome separation and establishing a bipolar spindle during cell mitosis.
<b>Synonyms:</b>	EG5; HKSP; KNSL1; TRIP-5; TRIP5

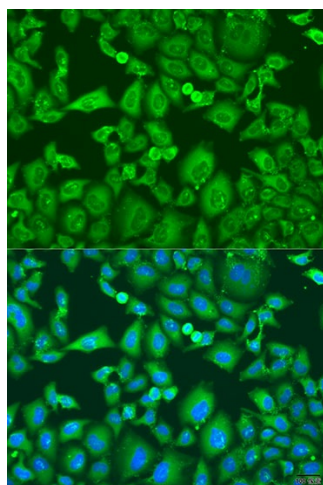


[View online »](#)

## Product images:



Western blot analysis of extracts of various cell lines, using EG5/EG5/KIF11 antibody (TA377789) at 1:1000 dilution. | Secondary antibody: HRP Goat Anti-Rabbit IgG (H+L) at 1:10000 dilution. | Lysates/proteins: 25ug per lane. | Blocking buffer: 3% nonfat dry milk in TBST. | Detection: ECL Basic Kit. | Exposure time: 5s.



Immunofluorescence analysis of U2OS cells using EG5/EG5/KIF11 antibody (TA377789) at dilution of 1:100. Blue: DAPI for nuclear staining.