

Product datasheet for **TA377788**

p90 Autoantigen (KIAA1524) Rabbit Polyclonal Antibody

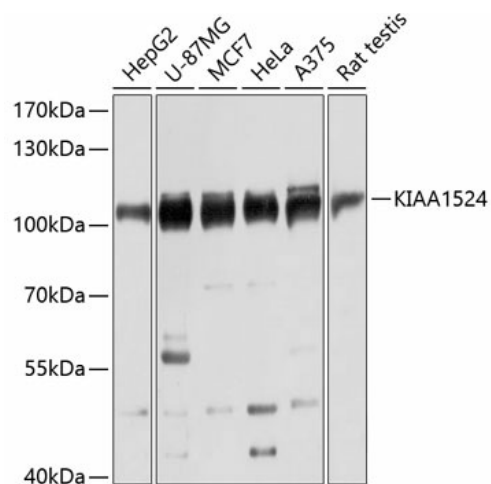
Product data:

Product Type:	Primary Antibodies
Applications:	ELISA, WB
Recommended Dilution:	WB, 1:500 - 1:1000 ELISA, Recommended starting concentration is 1 µg/mL. Please optimize the concentration based on your specific assay requirements.
Reactivity:	Human, Mouse, Rat
Modifications:	Unmodified
Host:	Rabbit
Isotype:	IgG
Clonality:	Polyclonal
Formulation:	Buffer: PBS with 0.01% thimerosal, 50% glycerol, pH7.3.
Concentration:	lot specific
Purification:	Affinity purification
Conjugation:	Unconjugated
Storage:	Store at -20°C. Avoid freeze / thaw cycles.
Stability:	Shelf life: one year from despatch.
Predicted Protein Size:	102kDa
Gene Name:	KIAA1524
Database Link:	Entrez Gene 57650 Human Q8TCG1
Background:	Enables protein homodimerization activity. Predicted to act upstream of or within positive regulation of neural precursor cell proliferation and spermatogenesis. Located in cytosol and plasma membrane.
Synonyms:	CIP2A; FLJ12850; MGC163436; p90



[View online »](#)

Product images:



Western blot analysis of lysates from NIH/3T3 cells