

Product datasheet for **TA377776S**

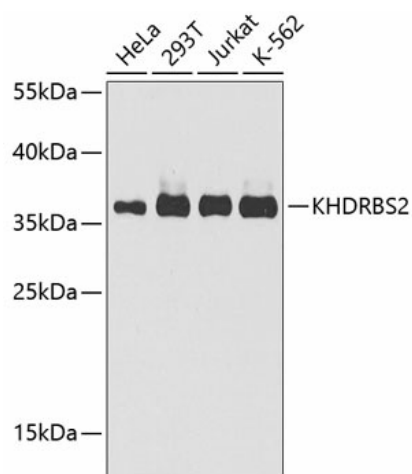
KHDRBS2 Rabbit Polyclonal Antibody

Product data:

| | |
|-------------------------|--|
| Product Type: | Primary Antibodies |
| Applications: | ELISA, IHC, WB |
| Recommended Dilution: | WB, 1:500 - 1:1000 IHC-P, 1:100 - 1:200 ELISA, Recommended starting concentration is 1 µg/mL. Please optimize the concentration based on your specific assay requirements. |
| Reactivity: | Human, Mouse |
| Modifications: | Unmodified |
| Host: | Rabbit |
| Isotype: | IgG |
| Clonality: | Polyclonal |
| Formulation: | Buffer: PBS with 0.02% sodium azide, 50% glycerol, pH 7.3. |
| Concentration: | lot specific |
| Purification: | Affinity purification |
| Conjugation: | Unconjugated |
| Storage: | Store at -20°C. Avoid freeze / thaw cycles. |
| Stability: | Shelf life: one year from despatch. |
| Predicted Protein Size: | 39kDa |
| Gene Name: | KH RNA binding domain containing, signal transduction associated 2 |
| Database Link: | Entrez Gene 202559 Human Q5VWX1 |
| Background: | Predicted to enable mRNA binding activity and poly(A) binding activity. Predicted to be involved in regulation of alternative mRNA splicing, via spliceosome. Predicted to be located in nucleoplasm. Predicted to be active in nucleus. |
| Synonyms: | bA535F17.1; FLJ38664; hSLM-1; MGC26664; SLM-1; SLM1 |


[View online »](#)

Product images:



Western blot analysis of various lysates using KHDRBS2 Rabbit pAb (TA377776) at 1:1000 dilution.

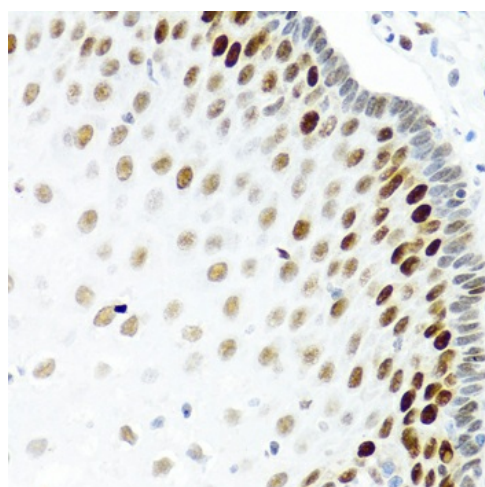
Secondary antibody: HRP-conjugated Goat anti-Rabbit IgG (H+L) (AS014) at 1:10000 dilution.

Lysates/proteins: 25µg per lane.

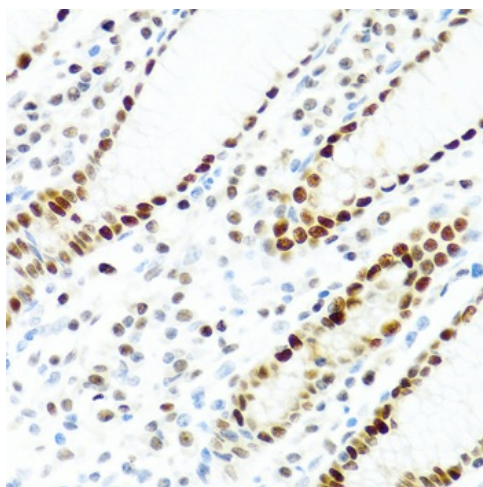
Blocking buffer: 3% nonfat dry milk in TBST.

Detection: ECL Enhanced Kit (RM00021).

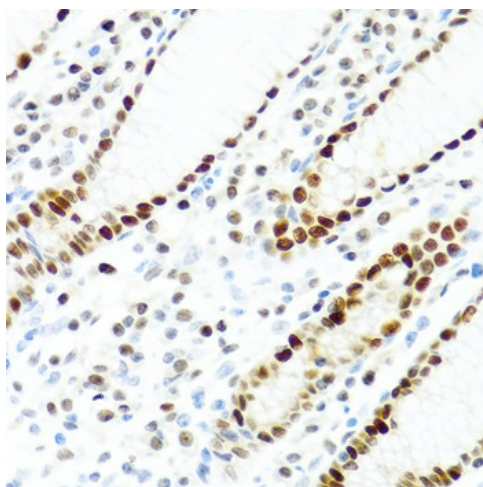
Exposure time: 30s.



Immunohistochemistry analysis of paraffin-embedded Human prostate cancer using KHDRBS2 Rabbit pAb (TA377776) at dilution of 1:100 (40x lens). Microwave antigen retrieval performed with 0.01M PBS Buffer (pH 7.2) prior to IHC staining.



Immunohistochemistry analysis of paraffin-embedded Human esophagus using KHDRBS2 Rabbit pAb ([TA377776]) at dilution of 1:100 (40x lens). Microwave antigen retrieval performed with 0.01M PBS Buffer (pH 7.2) prior to IHC staining.



Immunohistochemistry analysis of paraffin-embedded Human stomach using KHDRBS2 Rabbit pAb ([TA377776]) at dilution of 1:100 (40x lens). Microwave antigen retrieval performed with 0.01M PBS Buffer (pH 7.2) prior to IHC staining.