

Product datasheet for **TA377775S**

SAM68 (KHDRBS1) Rabbit Polyclonal Antibody

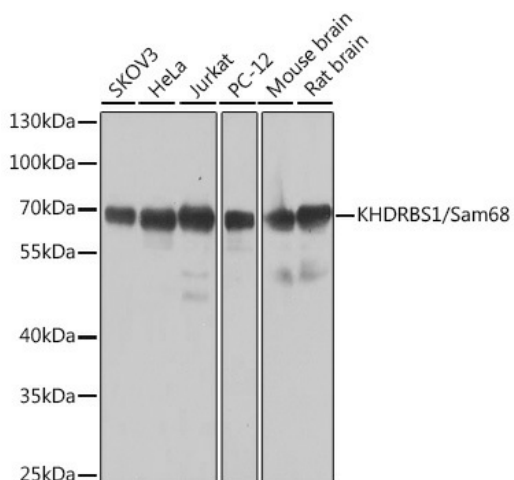
Product data:

Product Type:	Primary Antibodies
Applications:	ELISA, ICC/IF, IHC, WB
Recommended Dilution:	WB, 1:500 - 1:2000 IHC-P, 1:100 - 1:200 IF/ICC, 1:50 - 1:200 ELISA, Recommended starting concentration is 1 µg/mL. Please optimize the concentration based on your specific assay requirements.
Reactivity:	Human, Mouse, Rat
Modifications:	Unmodified
Host:	Rabbit
Isotype:	IgG
Clonality:	Polyclonal
Formulation:	Buffer: PBS with 0.02% sodium azide, 50% glycerol, pH 7.3.
Concentration:	lot specific
Purification:	Affinity purification
Conjugation:	Unconjugated
Storage:	Store at -20°C. Avoid freeze / thaw cycles.
Stability:	Shelf life: one year from despatch.
Predicted Protein Size:	48kDa
Gene Name:	KH RNA binding domain containing, signal transduction associated 1
Database Link:	Entrez Gene 10657 Human Q07666
Background:	This gene encodes a member of the K homology domain-containing, RNA-binding, signal transduction-associated protein family. The encoded protein appears to have many functions and may be involved in a variety of cellular processes, including alternative splicing, cell cycle regulation, RNA 3'-end formation, tumorigenesis, and regulation of human immunodeficiency virus gene expression. Alternative splicing results in multiple transcript variants.
Synonyms:	FLJ34027; p62; p68; SAM68



[View online »](#)

Product images:



Western blot analysis of various lysates using KHDRBS1/Sam68 Rabbit pAb ([TA377775]) at 1:1000 dilution.

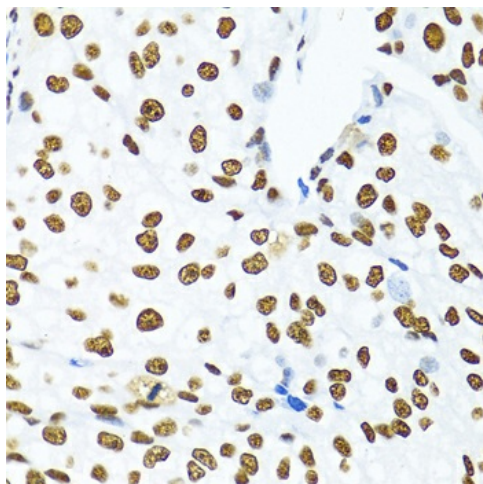
Secondary antibody: HRP-conjugated Goat anti-Rabbit IgG (H+L) at 1:10000 dilution.

Lysates/proteins: 25µg per lane.

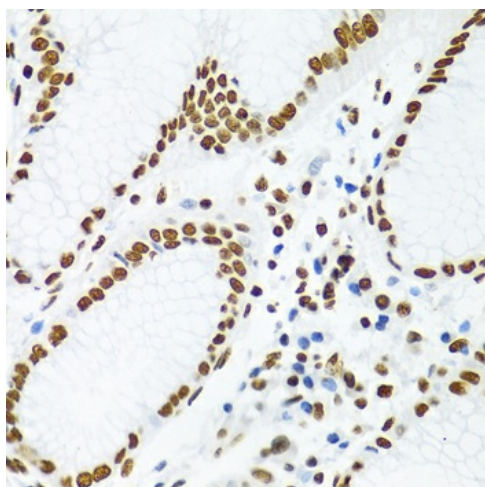
Blocking buffer: 3% nonfat dry milk in TBST.

Detection: ECL Basic Kit .

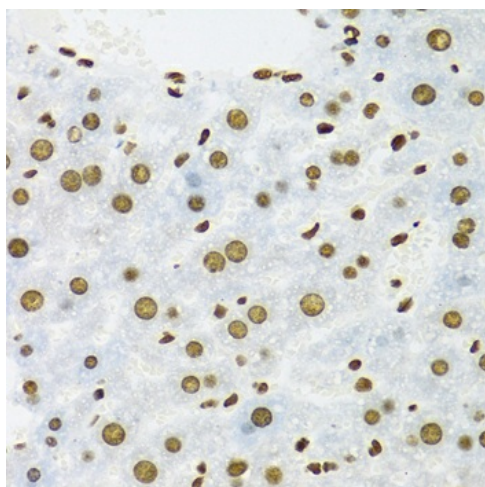
Exposure time: 10s.



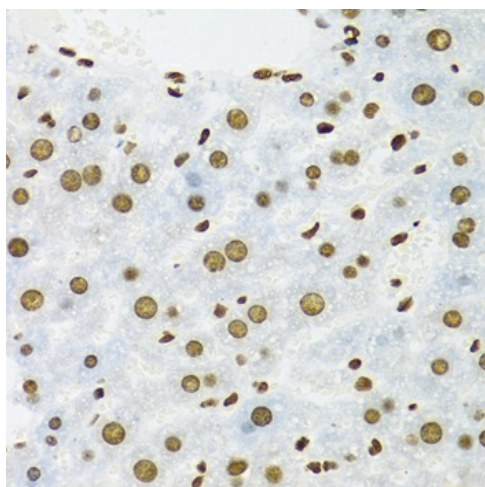
Immunohistochemistry analysis of paraffin-embedded Rat brain using KHDRBS1/Sam68 Rabbit pAb ([TA377775]) at dilution of 1:100 (40x lens). Microwave antigen retrieval performed with 0.01M PBS Buffer (pH 7.2) prior to IHC staining.



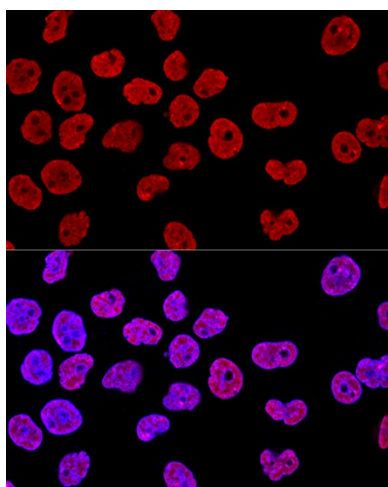
Immunohistochemistry analysis of paraffin-embedded Human prostate cancer using KHDRBS1/Sam68 Rabbit pAb ([TA377775]) at dilution of 1:100 (40x lens). Microwave antigen retrieval performed with 0.01M PBS Buffer (pH 7.2) prior to IHC staining.



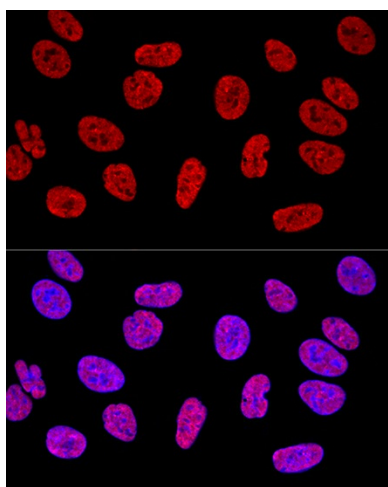
Immunohistochemistry analysis of paraffin-embedded Human stomach using KHDRBS1/Sam68 Rabbit pAb ([TA377775]) at dilution of 1:100 (40x lens). Microwave antigen retrieval performed with 0.01M PBS Buffer (pH 7.2) prior to IHC staining.



Immunohistochemistry analysis of paraffin-embedded Mouse liver using KHDRBS1/Sam68 Rabbit pAb ([TA377775]) at dilution of 1:100 (40x lens). Microwave antigen retrieval performed with 0.01M PBS Buffer (pH 7.2) prior to IHC staining.



Confocal immunofluorescence analysis of HeLa cells using KHDRBS1/Sam68 Rabbit pAb ([TA377775]) at dilution of 1:400. Blue: DAPI for nuclear staining.



Confocal immunofluorescence analysis of U2OS cells using KHDRBS1/Sam68 Rabbit pAb ([TA377775]) at dilution of 1:400. Blue: DAPI for nuclear staining.