

Product datasheet for **TA377775**

SAM68 (KHDRBS1) Rabbit Polyclonal Antibody

Product data:

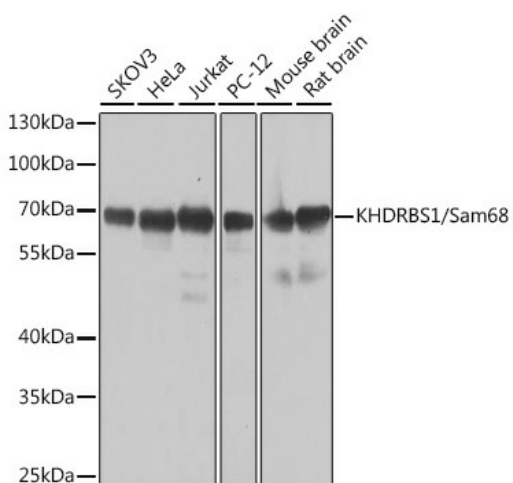
Product Type:	Primary Antibodies
Applications:	ICC/IF, IHC, WB
Recommended Dilution:	WB,1:500 - 1:2000 IHC,1:100 - 1:200 IF,1:50 - 1:200
Reactivity:	Human, Mouse, Rat
Modifications:	Unmodified
Host:	Rabbit
Isotype:	IgG
Clonality:	Polyclonal
Immunogen:	A synthetic peptide corresponding to a sequence within amino acids 300 to the C-terminus of human KHDRBS1/Sam68 (NP_006550.1).
Formulation:	Buffer: PBS with 0.02% sodium azide,50% glycerol,pH7.3.
Concentration:	lot specific
Purification:	Affinity purification
Conjugation:	Unconjugated
Storage:	Store at -20°C. Avoid freeze / thaw cycles.
Stability:	Shelf life: one year from despatch.
Predicted Protein Size:	44kDa/45kDa/48kDa
Gene Name:	KH RNA binding domain containing, signal transduction associated 1
Database Link:	Entrez Gene 10657 Human Q07666
Background:	This gene encodes a member of the K homology domain-containing, RNA-binding, signal transduction-associated protein family. The encoded protein appears to have many functions and may be involved in a variety of cellular processes, including alternative splicing, cell cycle regulation, RNA 3'-end formation, tumorigenesis, and regulation of human immunodeficiency virus gene expression. Alternative splicing results in multiple transcript variants.



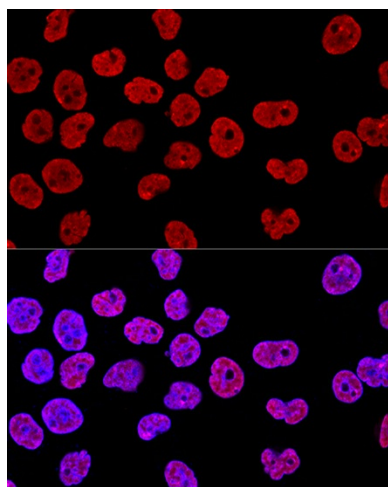
[View online »](#)

Synonyms: FLJ34027; p62; p68; SAM68

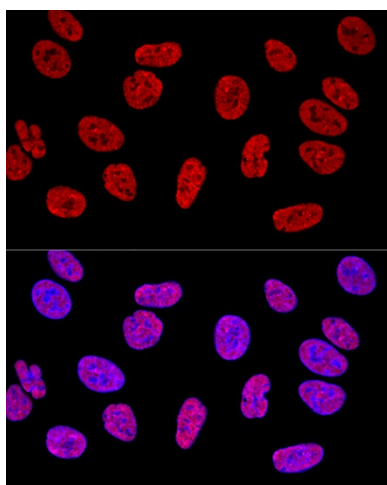
Product images:



Western blot analysis of extracts of various cell lines, using KHDRBS1/Sam68 antibody (TA377775) at 1:1000 dilution. | Secondary antibody: HRP Goat Anti-Rabbit IgG (H+L) at 1:10000 dilution. | Lysates/proteins: 25ug per lane. | Blocking buffer: 3% nonfat dry milk in TBST. | Detection: ECL Basic Kit. | Exposure time: 10s.



Confocal immunofluorescence analysis of HeLa cells using KHDRBS1/Sam68 Polyclonal Antibody (TA377775) at dilution of 1:400. Blue: DAPI for nuclear staining.



Confocal immunofluorescence analysis of U2OS cells using KHDRBS1/Sam68 Polyclonal Antibody (TA377775) at dilution of 1:400. Blue: DAPI for nuclear staining.