

Product datasheet for **TA377774**

KEL Rabbit Polyclonal Antibody

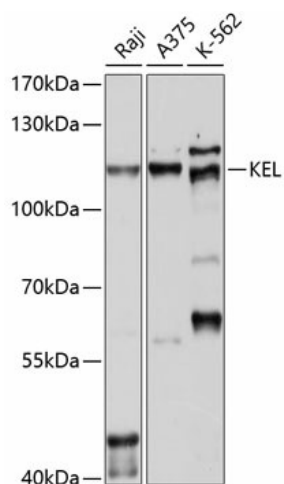
Product data:

Product Type:	Primary Antibodies
Applications:	WB
Recommended Dilution:	WB,1:200 - 1:1000
Reactivity:	Human
Modifications:	Unmodified
Host:	Rabbit
Isotype:	IgG
Clonality:	Polyclonal
Immunogen:	Recombinant fusion protein containing a sequence corresponding to amino acids 70-310 of human KEL (NP_000411.1).
Formulation:	Buffer: PBS with 0.02% sodium azide,50% glycerol,pH7.3.
Concentration:	lot specific
Purification:	Affinity purification
Conjugation:	Unconjugated
Storage:	Store at -20°C. Avoid freeze / thaw cycles.
Stability:	Shelf life: one year from despatch.
Predicted Protein Size:	82kDa
Gene Name:	Kell blood group, metallo-endopeptidase
Database Link:	Entrez Gene 3792 Human P23276
Background:	This gene encodes a type II transmembrane glycoprotein that is the highly polymorphic Kell blood group antigen. The Kell glycoprotein links via a single disulfide bond to the XK membrane protein that carries the Kx antigen. The encoded protein contains sequence and structural similarity to members of the neprilysin (M13) family of zinc endopeptidases.
Synonyms:	CD238; ECE3



[View online »](#)

Product images:



Western blot analysis of extracts of various cell lines, using KEL antibody (TA377774) at 1:1000 dilution. | Secondary antibody: HRP Goat Anti-Rabbit IgG (H+L) at 1:10000 dilution. | Lysates/proteins: 25ug per lane. | Blocking buffer: 3% nonfat dry milk in TBST. | Detection: ECL Enhanced Kit. | Exposure time: 20s.