

## Product datasheet for **TA377766**

### JMJD5 (KDM8) Rabbit Polyclonal Antibody

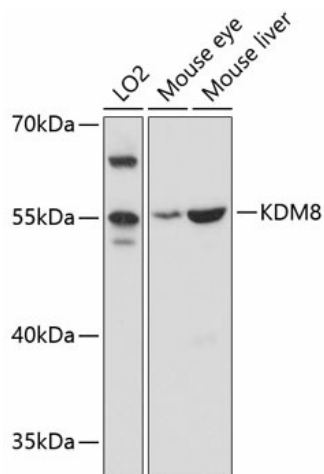
#### Product data:

|                         |   |
|-------------------------|---|
| Product Type:           | Primary Antibodies  |
| Applications:           | WB  |
| Recommended Dilution:   | WB,1:500 - 1:2000<br>IHC,1:50 - 1:200   |
| Reactivity:             | Human, Mouse  |
| Modifications:          | Unmodified  |
| Host:                   | Rabbit  |
| Isotype:                | IgG   |
| Clonality:              | Polyclonal  |
| Immunogen:              | Recombinant fusion protein containing a sequence corresponding to amino acids 147-416 of human KDM8 (NP_079049.2).  |
| Formulation:            | Buffer: PBS with 0.02% sodium azide,50% glycerol,pH7.3.   |
| Concentration:          | lot specific  |
| Purification:           | Affinity purification   |
| Conjugation:            | Unconjugated  |
| Storage:                | Store at -20°C. Avoid freeze / thaw cycles.   |
| Stability:              | Shelf life: one year from despatch.   |
| Predicted Protein Size: | 24kDa/47kDa/50kDa   |
| Gene Name:              | lysine demethylase 8  |
| Database Link:          | <a href="#">Entrez Gene 79831 Human Q8N371</a>  |
| Background:             | This gene likely encodes a histone lysine demethylase. Studies of a similar protein in mouse indicate a potential role for this protein as a tumor suppressor. Alternatively spliced transcript variants have been described. |
| Synonyms:               | JMJD5   |



[View online »](#)

## Product images:



Western blot analysis of extracts of various cell lines, using KDM8 antibody (TA377766) at 1:3000 dilution. | Secondary antibody: HRP Goat Anti-Rabbit IgG (H+L) at 1:10000 dilution. | Lysates/proteins: 25ug per lane. | Blocking buffer: 3% nonfat dry milk in TBST. | Detection: ECL Basic Kit . | Exposure time: 30s.