

Product datasheet for **TA377760S**

KDM5B Rabbit Polyclonal Antibody

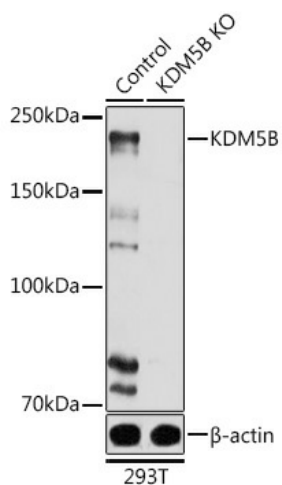
Product data:

Product Type:	Primary Antibodies
Applications:	ELISA, ICC/IF, WB
Recommended Dilution:	WB, 1:500 - 1:1000 IF/ICC, 1:50 - 1:200 ELISA, Recommended starting concentration is 1 µg/mL. Please optimize the concentration based on your specific assay requirements.
Reactivity:	Human, Mouse
Modifications:	Unmodified
Host:	Rabbit
Isotype:	IgG
Clonality:	Polyclonal
Formulation:	Buffer: PBS with 0.02% sodium azide, 50% glycerol, pH 7.3.
Concentration:	lot specific
Purification:	Affinity purification
Conjugation:	Unconjugated
Storage:	Store at -20°C. Avoid freeze / thaw cycles.
Stability:	Shelf life: one year from despatch.
Predicted Protein Size:	176kDa
Gene Name:	lysine demethylase 5B
Database Link:	Entrez Gene 10765 Human Q9UGL1
Background:	This gene encodes a lysine-specific histone demethylase that belongs to the jumonji/ARID domain-containing family of histone demethylases. The encoded protein is capable of demethylating tri-, di- and monomethylated lysine 4 of histone H3. This protein plays a role in the transcriptional repression of certain tumor suppressor genes and is upregulated in certain cancer cells. This protein may also play a role in genome stability and DNA repair. Alternate splicing results in multiple transcript variants.

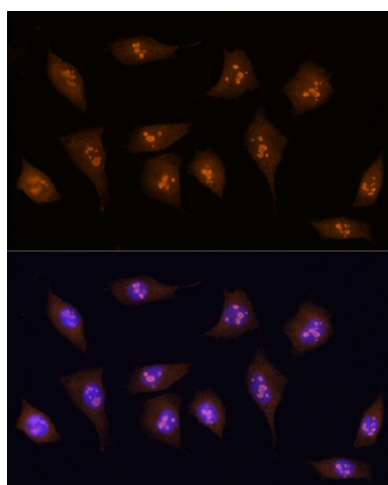

[View online »](#)

Synonyms: CT31; FLJ10538; FLJ12459; FLJ12491; FLJ16281; FLJ23670; JARID1B; PLU-1; PLU1; PUT1; RBBP2H1; RBBP2H1A; RBP2-H1; RBP2-like

Product images:



Western blot analysis of lysates from wild type (WT) and KDM5B knockout (KO) 293T cells



Immunofluorescence analysis of L929 cells using [KO Validated] KDM5B Rabbit pAb ([TA377760]) at dilution of 1:100 (40x lens). Secondary antibody: Cy3-conjugated Goat anti-Rabbit IgG (H+L) (AS007) at 1:500 dilution. Blue: DAPI for nuclear staining.