

Product datasheet for **TA377754S**

KDM3B Rabbit Polyclonal Antibody

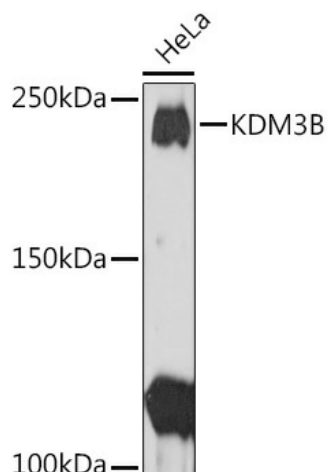
Product data:

Product Type:	Primary Antibodies
Applications:	ELISA, IHC, WB
Recommended Dilution:	WB, 1:500 - 1:2000 IHC-P, 1:50 - 1:200 ELISA, Recommended starting concentration is 1 µg/mL. Please optimize the concentration based on your specific assay requirements.
Reactivity:	Human
Modifications:	Unmodified
Host:	Rabbit
Isotype:	IgG
Clonality:	Polyclonal
Formulation:	PBS with 0.09% Sodium azide, 50% glycerol, pH7.3.
Concentration:	lot specific
Purification:	Affinity purification
Conjugation:	Unconjugated
Storage:	Store at -20°C. Avoid freeze / thaw cycles.
Stability:	Shelf life: one year from despatch.
Predicted Protein Size:	192kDa
Gene Name:	lysine demethylase 3B
Database Link:	Entrez Gene 51780 Human Q7LBC6
Background:	Predicted to enable chromatin DNA binding activity; histone H3-methyl-lysine-9 demethylase activity; and transcription coregulator activity. Predicted to be involved in histone H3-K9 demethylation and regulation of transcription by RNA polymerase II. Located in nucleoplasm. Biomarker of acute lymphoblastic leukemia; breast cancer; colorectal cancer; and lung non-small cell carcinoma.
Synonyms:	5qNCA; C5orf7; JHDM2B; JMJD1B; KIAA1082; NET22

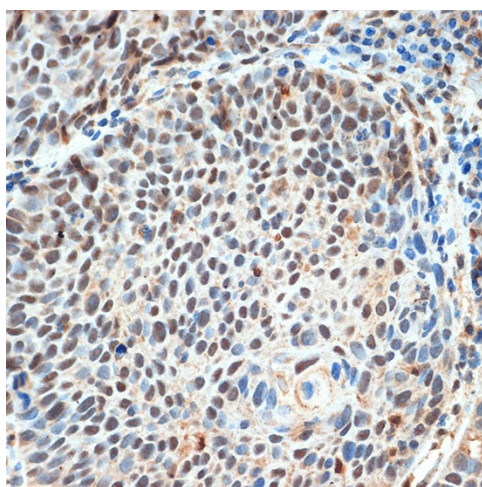


[View online »](#)

Product images:



Western blot analysis of lysates from HeLa cells



Immunohistochemistry analysis of paraffin-embedded Human esophageal cancer using KDM3B Rabbit pAb ([TA377754]) at dilution of 1:100 (40x lens). Microwave antigen retrieval performed with 0.01M Tris/EDTA Buffer (pH 9.0) prior to IHC staining.