

## Product datasheet for **TA377753**

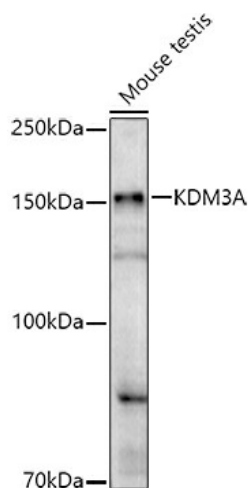
### **KDM3A / JHDM2A (KDM3A) Rabbit Polyclonal Antibody**

#### **Product data:**

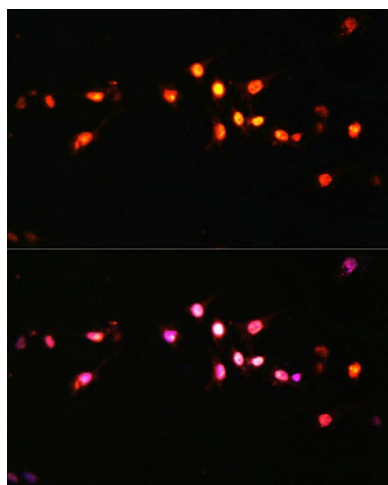
<b>Product Type:</b>	Primary Antibodies
<b>Applications:</b>	ICC/IF, IHC, WB
<b>Recommended Dilution:</b>	WB,1:500 - 1:2000 IHC,1:50 - 1:200 IF,1:50 - 1:200
<b>Reactivity:</b>	Human
<b>Modifications:</b>	Unmodified
<b>Host:</b>	Rabbit
<b>Isotype:</b>	IgG
<b>Clonality:</b>	Polyclonal
<b>Immunogen:</b>	A synthetic peptide corresponding to a sequence within amino acids 350-450 of human KDM3A (NP_060903.2).
<b>Formulation:</b>	Buffer: PBS with 0.02% sodium azide,50% glycerol,pH7.3.
<b>Concentration:</b>	lot specific
<b>Purification:</b>	Affinity purification
<b>Conjugation:</b>	Unconjugated
<b>Storage:</b>	Store at -20°C. Avoid freeze / thaw cycles.
<b>Stability:</b>	Shelf life: one year from despatch.
<b>Predicted Protein Size:</b>	147kDa
<b>Gene Name:</b>	lysine demethylase 3A
<b>Database Link:</b>	<a href="#">Entrez Gene 55818 Human Q9Y4C1</a>
<b>Background:</b>	This gene encodes a zinc finger protein that contains a jumonji domain and may play a role in hormone-dependent transcriptional activation. Alternative splicing results in multiple transcript variants.
<b>Synonyms:</b>	DKFZp686A24246; DKFZp686P07111; JHDM2A; JHMD2A; JMJD1; JMJD1A; KIAA0742; OTTHUMP00000160707; OTTHUMP00000203309; TSGA



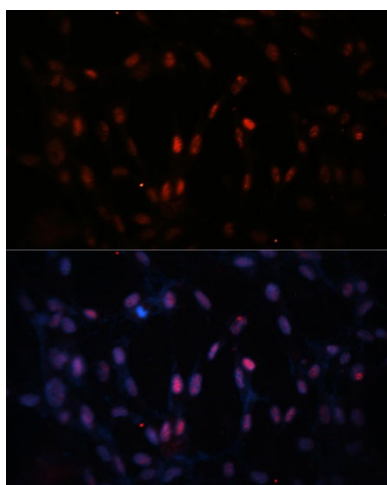
[View online »](#)

**Product images:**

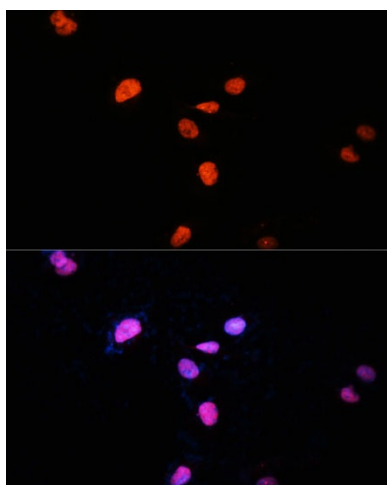
Western blot analysis of extracts of Mouse testis, using KDM3A antibody (TA377753) at 1:1000 dilution. | Secondary antibody: HRP Goat Anti-Rabbit IgG (H+L) at 1:10000 dilution. | Lysates/proteins: 25ug per lane. | Blocking buffer: 3% nonfat dry milk in TBST. | Detection: ECL Enhanced Kit. | Exposure time: 180s.



Immunofluorescence analysis of C6 cells using KDM3A Polyclonal Antibody (TA377753) at dilution of 1:100 (40x lens). Blue: DAPI for nuclear staining.



Immunofluorescence analysis of NIH-3T3 cells using KDM3A Polyclonal Antibody (TA377753) at dilution of 1:100 (40x lens). Blue: DAPI for nuclear staining.



Immunofluorescence analysis of U-2 OS cells using KDM3A Polyclonal Antibody (TA377753) at dilution of 1:100 (40x lens). Blue: DAPI for nuclear staining.