

Product datasheet for **TA377750S**

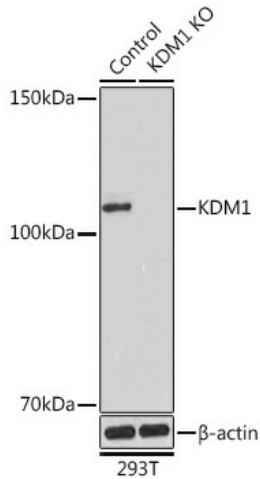
KDM1A Rabbit Polyclonal Antibody

Product data:

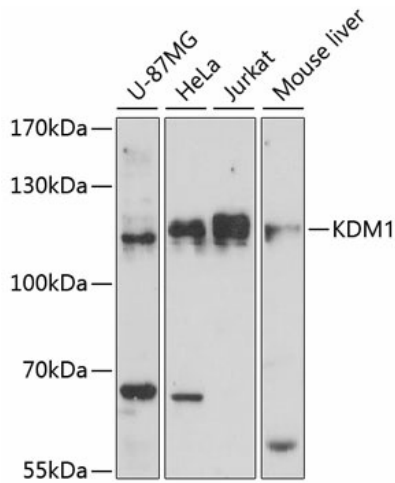
| | |
|-------------------------|--|
| Product Type: | Primary Antibodies |
| Applications: | ICC/IF, IHC, WB |
| Recommended Dilution: | WB,1:500 - 1:2000 IHC,1:50 - 1:100 IF,1:50 - 1:100 |
| Reactivity: | Human, Mouse, Rat |
| Modifications: | Unmodified |
| Host: | Rabbit |
| Isotype: | IgG |
| Clonality: | Polyclonal |
| Immunogen: | Recombinant fusion protein containing a sequence corresponding to amino acids 130-380 of human KDM1 (NP_055828.2). |
| Formulation: | Buffer: PBS with 0.02% sodium azide,50% glycerol,pH7.3. |
| Concentration: | lot specific |
| Purification: | Affinity purification |
| Conjugation: | Unconjugated |
| Storage: | Store at -20°C. Avoid freeze / thaw cycles. |
| Stability: | Shelf life: one year from despatch. |
| Predicted Protein Size: | 92kDa/95kDa |
| Gene Name: | lysine demethylase 1A |
| Database Link: | Entrez Gene 23028 Human O60341 |
| Background: | This gene encodes a nuclear protein containing a SWIRM domain, a FAD-binding motif, and an amine oxidase domain. This protein is a component of several histone deacetylase complexes, though it silences genes by functioning as a histone demethylase. Alternative splicing results in multiple transcript variants. |
| Synonyms: | AOF2; BHC110; KDM1; LSD1 |



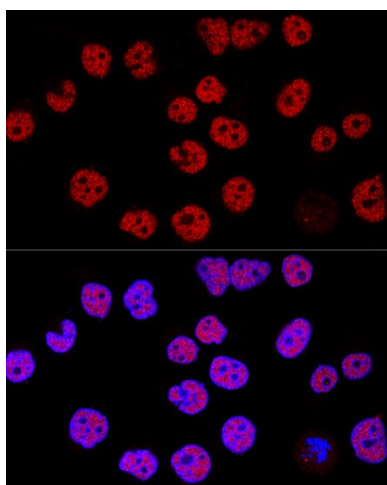
[View online »](#)

Product images:


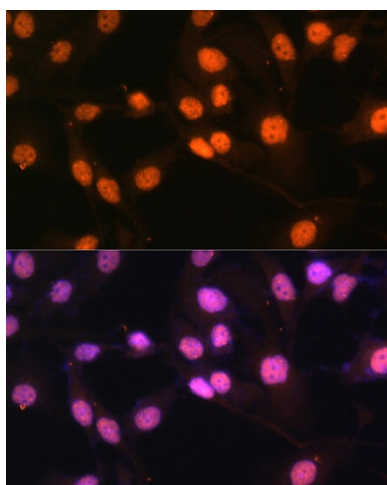
Western blot analysis of extracts from normal (control) and KDM1 Rabbit pAb knockout (KO) 293T cells, using KDM1 Rabbit pAb antibody ([TA377750]) at 1:1000 dilution. | Secondary antibody: HRP Goat Anti-Rabbit IgG (H+L) at 1:10000 dilution. | Lysates/proteins: 25ug per lane. | Blocking buffer: 3% nonfat dry milk in TBST. | Detection: ECL Basic Kit . | Exposure time: 180s.



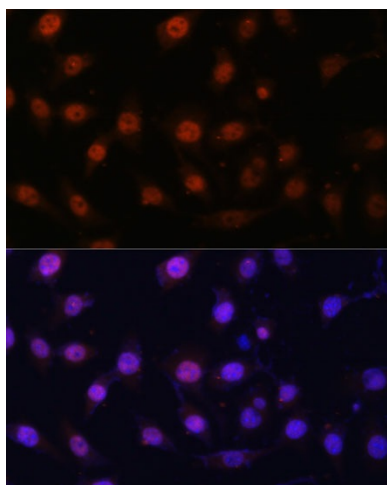
Western blot analysis of extracts of various cell lines, using KDM1 antibody ([TA377750]) at 1:1000 dilution. | Secondary antibody: HRP Goat Anti-Rabbit IgG (H+L) at 1:10000 dilution. | Lysates/proteins: 25ug per lane. | Blocking buffer: 3% nonfat dry milk in TBST. | Detection: ECL Basic Kit . | Exposure time: 90s.



Confocal immunofluorescence analysis of HeLa cells using KDM1 Polyclonal Antibody ([TA377750]) at dilution of 1:200. Blue: DAPI for nuclear staining.



Immunofluorescence analysis of HeLa cells using KDM1 Polyclonal Antibody ([TA377750]) at dilution of 1:100 (40x lens). Blue: DAPI for nuclear staining.



Immunofluorescence analysis of L929 cells using KDM1 Polyclonal Antibody ([TA377750]) at dilution of 1:100 (40x lens). Blue: DAPI for nuclear staining.