

Product datasheet for **TA377750**

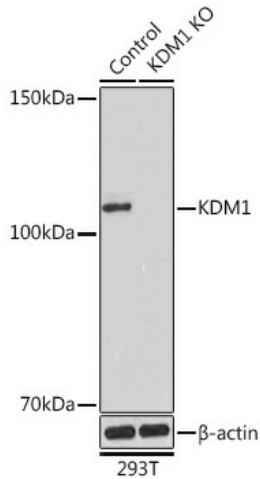
KDM1A Rabbit Polyclonal Antibody

Product data:

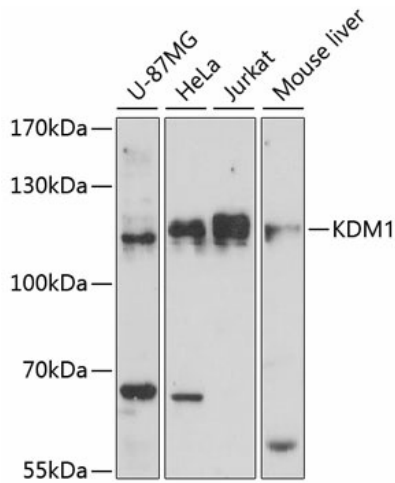
Product Type:	Primary Antibodies
Applications:	ICC/IF, IHC, WB
Recommended Dilution:	WB,1:500 - 1:2000 IHC,1:50 - 1:100 IF,1:50 - 1:100
Reactivity:	Human, Mouse, Rat
Modifications:	Unmodified
Host:	Rabbit
Isotype:	IgG
Clonality:	Polyclonal
Immunogen:	Recombinant fusion protein containing a sequence corresponding to amino acids 130-380 of human KDM1 (NP_055828.2).
Formulation:	Buffer: PBS with 0.02% sodium azide,50% glycerol,pH7.3.
Concentration:	lot specific
Purification:	Affinity purification
Conjugation:	Unconjugated
Storage:	Store at -20°C. Avoid freeze / thaw cycles.
Stability:	Shelf life: one year from despatch.
Predicted Protein Size:	92kDa/95kDa
Gene Name:	lysine demethylase 1A
Database Link:	Entrez Gene 23028 Human O60341
Background:	This gene encodes a nuclear protein containing a SWIRM domain, a FAD-binding motif, and an amine oxidase domain. This protein is a component of several histone deacetylase complexes, though it silences genes by functioning as a histone demethylase. Alternative splicing results in multiple transcript variants.
Synonyms:	AOF2; BHC110; KDM1; LSD1



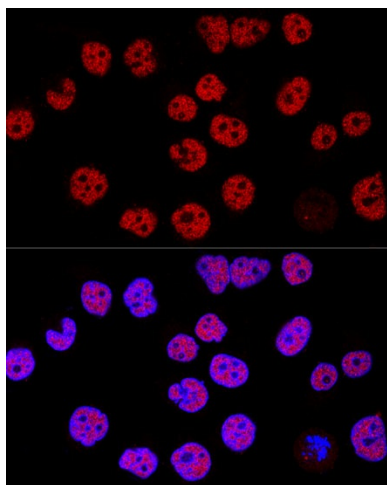
[View online »](#)

Product images:


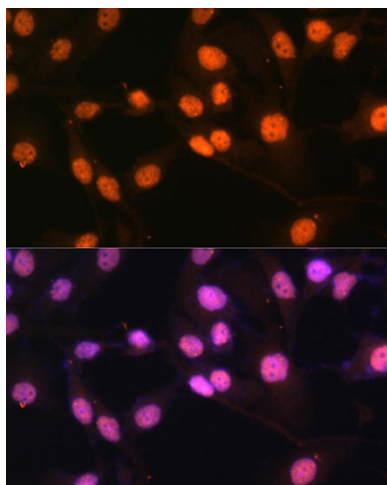
Western blot analysis of extracts from normal (control) and KDM1 Rabbit pAb knockout (KO) 293T cells, using KDM1 Rabbit pAb antibody (TA377750) at 1:1000 dilution. |Secondary antibody: HRP Goat Anti-Rabbit IgG (H+L) at 1:10000 dilution. |Lysates/proteins: 25ug per lane. |Blocking buffer: 3% nonfat dry milk in TBST. |Detection: ECL Basic Kit . |Exposure time: 180s.



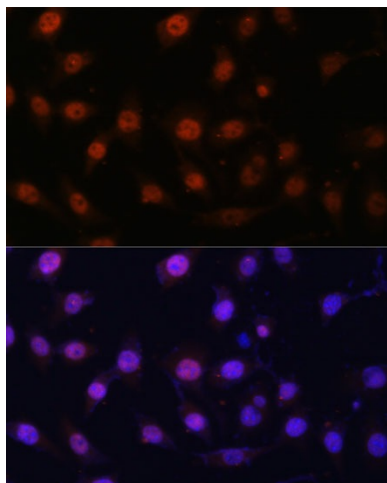
Western blot analysis of extracts of various cell lines, using KDM1 antibody (TA377750) at 1:1000 dilution. |Secondary antibody: HRP Goat Anti-Rabbit IgG (H+L) at 1:10000 dilution. |Lysates/proteins: 25ug per lane. |Blocking buffer: 3% nonfat dry milk in TBST. |Detection: ECL Basic Kit . |Exposure time: 90s.



Confocal immunofluorescence analysis of HeLa cells using KDM1 Polyclonal Antibody (TA377750) at dilution of 1:200. Blue: DAPI for nuclear staining.



Immunofluorescence analysis of HeLa cells using KDM1 Polyclonal Antibody (TA377750) at dilution of 1:100 (40x lens). Blue: DAPI for nuclear staining.



Immunofluorescence analysis of L929 cells using KDM1 Polyclonal Antibody (TA377750) at dilution of 1:100 (40x lens). Blue: DAPI for nuclear staining.