

## Product datasheet for **TA377744**

### KCNS3 Rabbit Polyclonal Antibody

#### Product data:

|                         |                                                                                                                                                                                 |
|-------------------------|---------------------------------------------------------------------------------------------------------------------------------------------------------------------------------|
| Product Type:           | Primary Antibodies                                                                                                                                                              |
| Applications:           | ELISA, IHC, WB                                                                                                                                                                  |
| Recommended Dilution:   | WB, 1:500 - 1:2000<br>IHC-P, 1:50 - 1:200<br>ELISA, Recommended starting concentration is 1 µg/mL. Please optimize the concentration based on your specific assay requirements. |
| Reactivity:             | Human, Mouse, Rat                                                                                                                                                               |
| Modifications:          | Unmodified                                                                                                                                                                      |
| Host:                   | Rabbit                                                                                                                                                                          |
| Isotype:                | IgG                                                                                                                                                                             |
| Clonality:              | Polyclonal                                                                                                                                                                      |
| Formulation:            | Buffer: PBS with 0.02% sodium azide, 50% glycerol, pH 7.3.                                                                                                                      |
| Concentration:          | lot specific                                                                                                                                                                    |
| Purification:           | Affinity purification                                                                                                                                                           |
| Conjugation:            | Unconjugated                                                                                                                                                                    |
| Storage:                | Store at -20°C. Avoid freeze / thaw cycles.                                                                                                                                     |
| Stability:              | Shelf life: one year from despatch.                                                                                                                                             |
| Predicted Protein Size: | 56kDa                                                                                                                                                                           |
| Gene Name:              | potassium voltage-gated channel modifier subfamily S member 3                                                                                                                   |
| Database Link:          | <a href="#">Entrez Gene 3790 Human</a><br><a href="#">Q9BQ31</a>                                                                                                                |

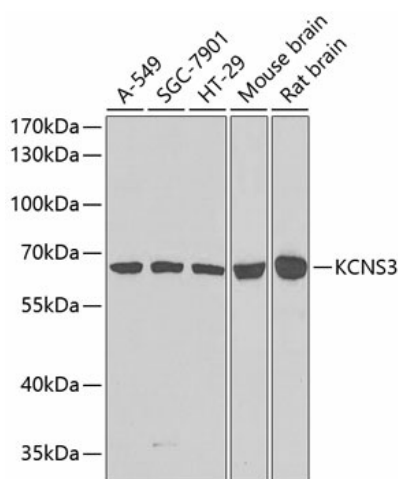
[View online »](#)

**Background:**

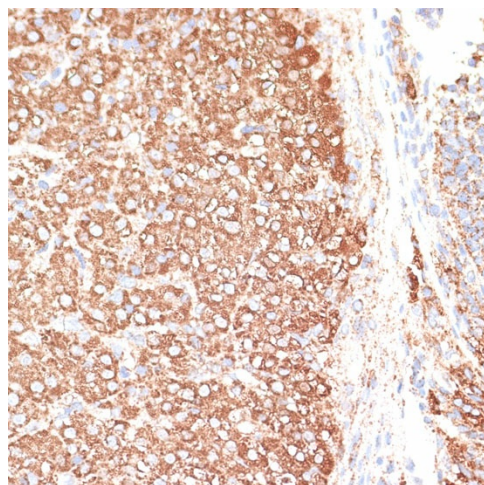
Voltage-gated potassium channels form the largest and most diversified class of ion channels and are present in both excitable and nonexcitable cells. Their main functions are associated with the regulation of the resting membrane potential and the control of the shape and frequency of action potentials. The alpha subunits are of 2 types: those that are functional by themselves and those that are electrically silent but capable of modulating the activity of specific functional alpha subunits. The protein encoded by this gene is not functional by itself but can form heteromultimers with member 1 and with member 2 (and possibly other members) of the Shab-related subfamily of potassium voltage-gated channel proteins. This gene belongs to the S subfamily of the potassium channel family. Alternatively spliced transcript variants encoding the same protein have been found for this gene.

**Synonyms:**

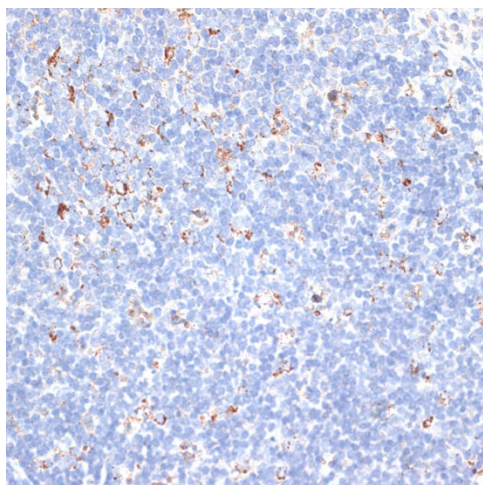
KV9.3; MGC9481; OTTHUMP00000200486

**Product images:**


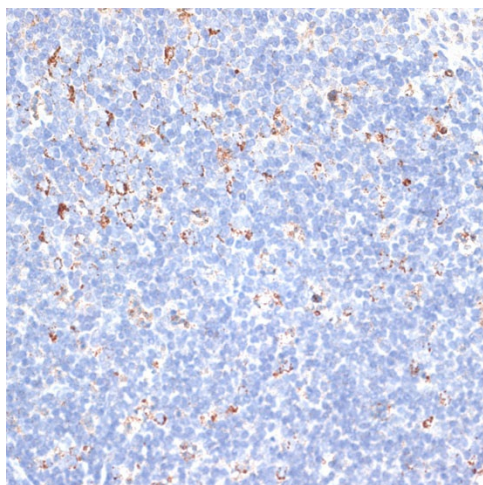
Western blot analysis of various lysates using KCNS3 Rabbit pAb (TA377744) at 1:1000 dilution. Secondary antibody: HRP-conjugated Goat anti-Rabbit IgG (H+L) (AS014) at 1:10000 dilution. Lysates/proteins: 25µg per lane. Blocking buffer: 3% nonfat dry milk in TBST. Detection: ECL Basic Kit (RM00020). Exposure time: 90s.



Immunohistochemistry analysis of paraffin-embedded Rat ovary using KCNS3 Rabbit pAb (TA377744) at dilution of 1:100 (40x lens). Microwave antigen retrieval performed with 0.01M PBS Buffer (pH 7.2) prior to IHC staining.



Immunohistochemistry analysis of paraffin-embedded Human colon carcinoma using KCNS3 Rabbit pAb (TA377744) at dilution of 1:100 (40x lens). Microwave antigen retrieval performed with 0.01M PBS Buffer (pH 7.2) prior to IHC staining.



Immunohistochemistry analysis of paraffin-embedded Mouse spleen using KCNS3 Rabbit pAb (TA377744) at dilution of 1:100 (40x lens). Microwave antigen retrieval performed with 0.01M PBS Buffer (pH 7.2) prior to IHC staining.