

Product datasheet for **TA377743S**

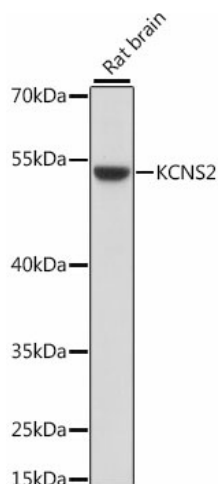
KCNS2 Rabbit Polyclonal Antibody

Product data:

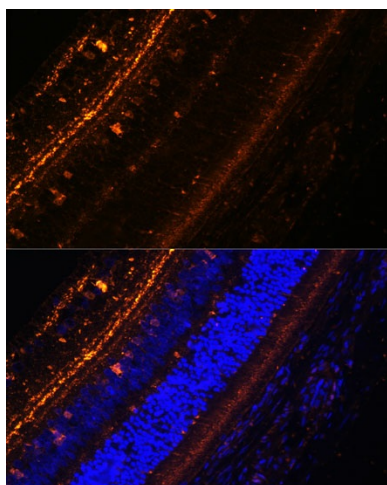
Product Type:	Primary Antibodies
Applications:	ICC/IF, WB
Recommended Dilution:	WB,1:500 - 1:2000 IHC,1:50 - 1:100 IF,1:50 - 1:100
Reactivity:	Human, Mouse, Rat
Modifications:	Unmodified
Host:	Rabbit
Isotype:	IgG
Clonality:	Polyclonal
Immunogen:	Recombinant fusion protein containing a sequence corresponding to amino acids 1-187 of human KCNS2 (NP_065748.1).
Formulation:	Buffer: PBS with 0.02% sodium azide,50% glycerol,pH7.3.
Concentration:	lot specific
Purification:	Affinity purification
Conjugation:	Unconjugated
Storage:	Store at -20°C. Avoid freeze / thaw cycles.
Stability:	Shelf life: one year from despatch.
Predicted Protein Size:	54kDa
Gene Name:	potassium voltage-gated channel modifier subfamily S member 2
Database Link:	Entrez Gene 3788 Human Q9ULS6
Background:	Potassium channel subunit that does not form functional channels by itself. Can form functional heterotetrameric channels with KCNB1 and KCNB2; modulates the delayed rectifier voltage-gated potassium channel activation and deactivation rates of KCNB1 and KCNB2.
Synonyms:	KIAA1144; Kv9.2



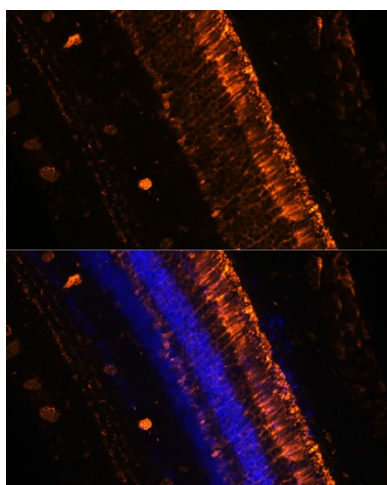
[View online »](#)

Product images:

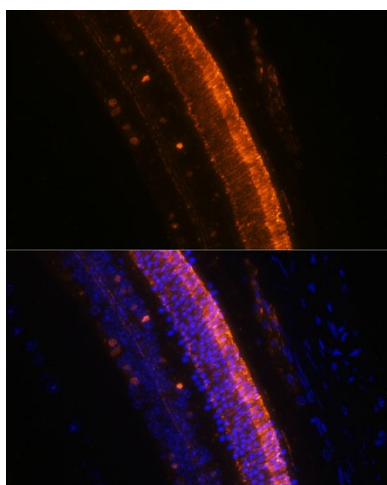
Western blot analysis of extracts of rat brain, using KCNS2 antibody ([TA377743]) at 1:1000 dilution. | Secondary antibody: HRP Goat Anti-Rabbit IgG (H+L) at 1:10000 dilution. | Lysates/proteins: 25ug per lane. | Blocking buffer: 3% nonfat dry milk in TBST. | Detection: ECL Basic Kit . | Exposure time: 90s.



Immunofluorescence analysis of rat eye using KCNS2 Polyclonal Antibody ([TA377743]) at dilution of 1:100 (40x lens). Blue: DAPI for nuclear staining.



Immunofluorescence analysis of mouse eye using KCNS2 Polyclonal Antibody ([TA377743]) at dilution of 1:100 (20x lens). Blue: DAPI for nuclear staining.



Immunofluorescence analysis of mouse eye using KCNS2 Polyclonal Antibody ([TA377743]) at dilution of 1:100 (40x lens). Blue: DAPI for nuclear staining.