

## Product datasheet for **TA377737**

### KCNMB2 Rabbit Polyclonal Antibody

#### Product data:

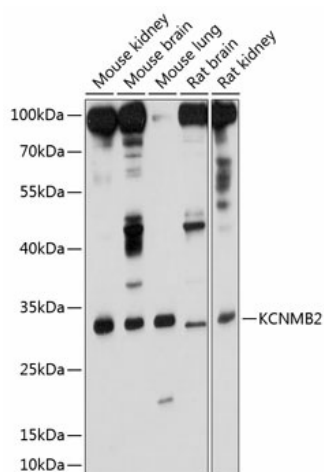
|                         |  |
|-------------------------|--|
| Product Type:           | Primary Antibodies   |
| Applications:           | WB   |
| Recommended Dilution:   | WB,1:500 - 1:2000  |
| Reactivity:             | Mouse, Rat   |
| Modifications:          | Unmodified   |
| Host:                   | Rabbit   |
| Isotype:                | IgG  |
| Clonality:              | Polyclonal   |
| Immunogen:              | Recombinant fusion protein containing a sequence corresponding to amino acids 68-194 of human KCNMB2 (NP_005823.1).  |
| Formulation:            | Buffer: PBS with 0.02% sodium azide,50% glycerol,pH7.3.  |
| Concentration:          | lot specific   |
| Purification:           | Affinity purification  |
| Conjugation:            | Unconjugated   |
| Storage:                | Store at -20°C. Avoid freeze / thaw cycles.  |
| Stability:              | Shelf life: one year from despatch.  |
| Predicted Protein Size: | 27kDa  |
| Gene Name:              | potassium calcium-activated channel subfamily M regulatory beta subunit 2  |
| Database Link:          | <a href="#">Q9Y691</a>   |
| Background:             | MaxiK channels are large conductance, voltage and calcium-sensitive potassium channels which are fundamental to the control of smooth muscle tone and neuronal excitability. MaxiK channels can be formed by 2 subunits: the pore-forming alpha subunit and the modulatory beta subunit. The protein encoded by this gene is an auxiliary beta subunit which decreases the activation time of MaxiK alpha subunit currents. Alternative splicing results in multiple transcript variants of this gene. Additional variants are discussed in the literature, but their full length nature has not been described. |



[View online »](#)

**Synonyms:** BKbeta2; Hbeta2; Hbeta3; K(VCA)beta-2; MGC22431; OTTHUMP00000211869; OTTHUMP00000211871; OTTHUMP00000211872; Slo-beta-2

**Product images:**



Western blot analysis of extracts of various cell lines, using KCNMB2 antibody (TA377737) at 1:1000 dilution. | Secondary antibody: HRP Goat Anti-Rabbit IgG (H+L) at 1:10000 dilution. | Lysates/proteins: 25ug per lane. | Blocking buffer: 3% nonfat dry milk in TBST. | Detection: ECL Basic Kit . | Exposure time: 30s.