

Product datasheet for **TA377735**

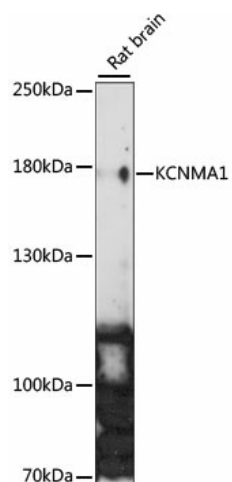
KCNMA1 Rabbit Polyclonal Antibody

Product data:

Product Type:	Primary Antibodies
Applications:	WB
Recommended Dilution:	WB,1:200 - 1:2000
Reactivity:	Rat
Modifications:	Unmodified
Host:	Rabbit
Isotype:	IgG
Clonality:	Polyclonal
Immunogen:	A synthetic peptide corresponding to a sequence within amino acids 850-950 of human KCNMA1 (NP_001258447.1).
Formulation:	Buffer: PBS with 0.02% sodium azide,50% glycerol,pH7.3.
Concentration:	lot specific
Purification:	Affinity purification
Conjugation:	Unconjugated
Storage:	Store at -20°C. Avoid freeze / thaw cycles.
Stability:	Shelf life: one year from despatch.
Predicted Protein Size:	17kDa/130kDa/134kDa/135kDa/137kDa/138kDa
Gene Name:	potassium calcium-activated channel subfamily M alpha 1
Database Link:	Q12791
Background:	MaxiK channels are large conductance, voltage and calcium-sensitive potassium channels which are fundamental to the control of smooth muscle tone and neuronal excitability. MaxiK channels can be formed by 2 subunits: the pore-forming alpha subunit, which is the product of this gene, and the modulatory beta subunit. Intracellular calcium regulates the physical association between the alpha and beta subunits. Alternatively spliced transcript variants encoding different isoforms have been identified.
Synonyms:	bA205K10.1; BKTM; DKFZp686K1437; hSlo; K(VCA)alpha; KCa1.1; KCNMA; MaxiK; MGC71881; mSLO1; SAKCA; SLO; SLO-ALPHA; Slo1



[View online »](#)

Product images:

Western blot analysis of extracts of Rat brain, using KCNMA1 antibody (TA377735) at 1:1000 dilution. | Secondary antibody: HRP Goat Anti-Rabbit IgG (H+L) at 1:10000 dilution. | Lysates/proteins: 25ug per lane. | Blocking buffer: 3% nonfat dry milk in TBST. | Detection: ECL Enhanced Kit . | Exposure time: 90s.