

Product datasheet for **TA377725S**

KCNJ5 Rabbit Polyclonal Antibody

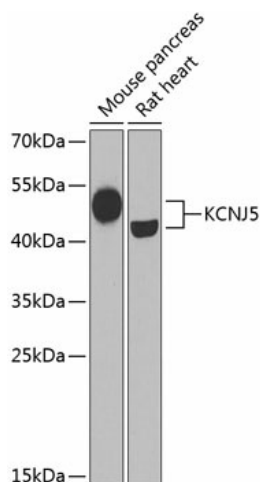
Product data:

Product Type:	Primary Antibodies
Applications:	ELISA, WB
Recommended Dilution:	WB, 1:500 - 1:2000 ELISA, Recommended starting concentration is 1 µg/mL. Please optimize the concentration based on your specific assay requirements.
Reactivity:	Human, Mouse, Rat
Modifications:	Unmodified
Host:	Rabbit
Isotype:	IgG
Clonality:	Polyclonal
Formulation:	Buffer: PBS with 0.02% sodium azide, 50% glycerol, pH 7.3.
Concentration:	lot specific
Purification:	Affinity purification
Conjugation:	Unconjugated
Storage:	Store at -20°C. Avoid freeze / thaw cycles.
Stability:	Shelf life: one year from despatch.
Predicted Protein Size:	48kDa
Gene Name:	potassium voltage-gated channel subfamily J member 5
Database Link:	Entrez Gene 3762 Human P48544
Background:	This gene encodes an integral membrane protein which belongs to one of seven subfamilies of inward-rectifier potassium channel proteins called potassium channel subfamily J. The encoded protein is a subunit of the potassium channel which is homotetrameric. It is controlled by G-proteins and has a greater tendency to allow potassium to flow into a cell rather than out of a cell. Naturally occurring mutations in this gene are associated with aldosterone-producing adenomas.
Synonyms:	CIR; GIRK4; KATP-1; KATP1; KIR3.4



[View online »](#)

Product images:



Western blot analysis of various lysates using KCNJ5 Rabbit pAb ([TA377725]) at 1:1000 dilution. Secondary antibody: HRP-conjugated Goat anti-Rabbit IgG (H+L) (AS014) at 1:10000 dilution. Lysates/proteins: 25µg per lane. Blocking buffer: 3% nonfat dry milk in TBST. Detection: ECL Basic Kit (RM00020). Exposure time: 30s.