

Product datasheet for **TA377715**

Kir4.1 (KCNJ10) Rabbit Polyclonal Antibody

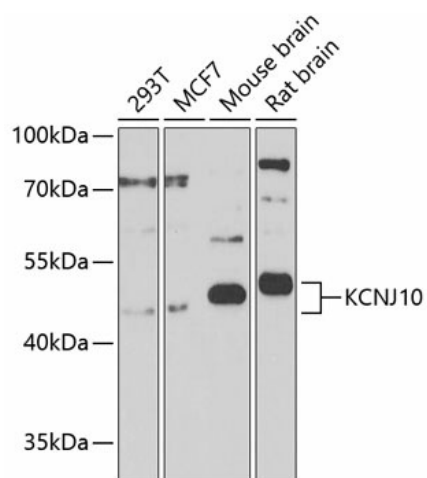
Product data:

Product Type:	Primary Antibodies
Applications:	WB
Recommended Dilution:	WB,1:500 - 1:2000
Reactivity:	Human, Mouse, Rat
Modifications:	Unmodified
Host:	Rabbit
Isotype:	IgG
Clonality:	Polyclonal
Immunogen:	A synthetic peptide corresponding to a sequence within amino acids 50-150 of human KCNJ10 (NP_002232.2).
Formulation:	Buffer: PBS with 0.02% sodium azide,50% glycerol,pH7.3.
Concentration:	lot specific
Purification:	Affinity purification
Conjugation:	Unconjugated
Storage:	Store at -20°C. Avoid freeze / thaw cycles.
Stability:	Shelf life: one year from despatch.
Predicted Protein Size:	42kDa
Gene Name:	potassium voltage-gated channel subfamily J member 10
Database Link:	Entrez Gene 3766 Human P78508
Background:	This gene encodes a member of the inward rectifier-type potassium channel family, characterized by having a greater tendency to allow potassium to flow into, rather than out of, a cell. The encoded protein may form a heterodimer with another potassium channel protein and may be responsible for the potassium buffering action of glial cells in the brain. Mutations in this gene have been associated with seizure susceptibility of common idiopathic generalized epilepsy syndromes.
Synonyms:	BIRK-10; KCNJ13-PEN; Kir1.2; Kir4.1; SESAME



[View online »](#)

Product images:



Western blot analysis of extracts of various cell lines, using KCNJ10 Antibody (TA377715) at 1:1000 dilution. | Secondary antibody: HRP Goat Anti-Rabbit IgG (H+L) at 1:10000 dilution. | Lysates/proteins: 25ug per lane. | Blocking buffer: 3% nonfat dry milk in TBST. | Detection: ECL Basic Kit . | Exposure time: 90s.