

Product datasheet for **TA377699S**

KCNC1 Rabbit Polyclonal Antibody

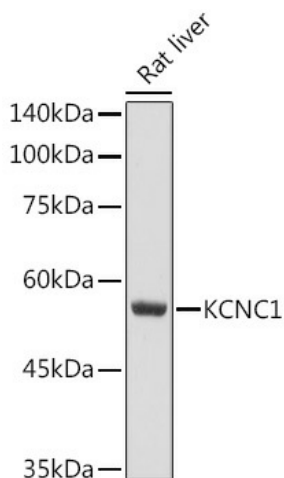
Product data:

Product Type:	Primary Antibodies
Applications:	WB
Recommended Dilution:	WB,1:500 - 1:2000
Reactivity:	Human, Mouse, Rat
Modifications:	Unmodified
Host:	Rabbit
Isotype:	IgG
Clonality:	Polyclonal
Immunogen:	A synthetic peptide of human KCNC1
Formulation:	Buffer: PBS with 0.02% sodium azide,50% glycerol,pH7.3.
Concentration:	lot specific
Purification:	Affinity purification
Conjugation:	Unconjugated
Storage:	Store at -20°C. Avoid freeze / thaw cycles.
Stability:	Shelf life: one year from despatch.
Predicted Protein Size:	57kDa/65kDa
Gene Name:	potassium voltage-gated channel subfamily C member 1
Database Link:	Entrez Gene 3746 Human P48547
Background:	This gene encodes a member of a family of integral membrane proteins that mediate the voltage-dependent potassium ion permeability of excitable membranes. Alternative splicing is thought to result in two transcript variants encoding isoforms that differ at their C-termini. These isoforms have had conflicting names in the literature: the longer isoform has been called both 'b' and 'alpha', while the shorter isoform has been called both 'a' and 'beta' (PMIDs 1432046, 12091563).
Synonyms:	FLJ41162; FLJ42249; FLJ43491; Kv3.1; KV4; MGC129855; NGK2



[View online »](#)

Product images:



Western blot analysis of extracts of Rat liver, using KCNC1 antibody ([TA377699]) at 1:500 dilution. | Secondary antibody: HRP Goat Anti-Rabbit IgG (H+L) at 1:10000 dilution. | Lysates/proteins: 25ug per lane. | Blocking buffer: 3% nonfat dry milk in TBST. | Detection: ECL Basic Kit . | Exposure time: 10s.