

Product datasheet for **TA377691S**

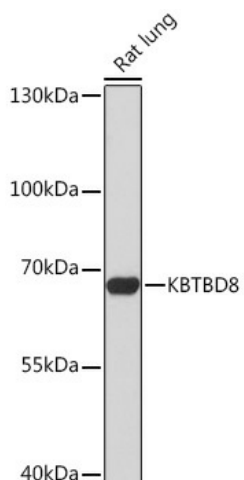
KBTBD8 Rabbit Polyclonal Antibody

Product data:

Product Type:	Primary Antibodies
Applications:	ELISA, ICC/IF, WB
Recommended Dilution:	WB, 1:500 - 1:2000 IF/ICC, 1:50 - 1:200 ELISA, Recommended starting concentration is 1 µg/mL. Please optimize the concentration based on your specific assay requirements.
Reactivity:	Mouse, Rat
Host:	Rabbit
Isotype:	IgG
Clonality:	Polyclonal
Formulation:	Buffer: PBS with 0.02% sodium azide, 50% glycerol, pH 7.3.
Concentration:	lot specific
Purification:	Affinity purification
Conjugation:	Unconjugated
Storage:	Store at -20°C. Avoid freeze / thaw cycles.
Stability:	Shelf life: one year from despatch.
Predicted Protein Size:	69kDa
Gene Name:	kelch repeat and BTB domain containing 8
Database Link:	Q8NFY9
Background:	Involved in neural crest cell development; neural crest formation; and protein monoubiquitination. Part of Cul3-RING ubiquitin ligase complex.
Synonyms:	FLJ57592; KIAA1842; TA-KRP; TAKRP



[View online »](#)

Product images:

Western blot analysis of lysates from Rat lung