

## Product datasheet for **TA377690S**

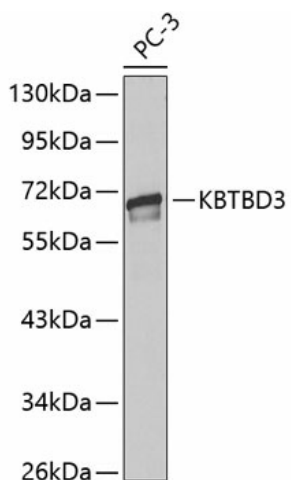
### **Kbtbd3 Rabbit Polyclonal Antibody**

#### **Product data:**

Product Type:	Primary Antibodies
Applications:	ELISA, WB
Recommended Dilution:	WB, 1:500 - 1:2000 ELISA, Recommended starting concentration is 1 µg/mL. Please optimize the concentration based on your specific assay requirements.
Reactivity:	Human
Modifications:	Unmodified
Host:	Rabbit
Isotype:	IgG
Clonality:	Polyclonal
Formulation:	Buffer: PBS with 0.02% sodium azide, 50% glycerol, pH 7.3.
Concentration:	lot specific
Purification:	Affinity purification
Conjugation:	Unconjugated
Storage:	Store at -20°C. Avoid freeze / thaw cycles.
Stability:	Shelf life: one year from despatch.
Predicted Protein Size:	69kDa
Gene Name:	kelch repeat and BTB (POZ) domain containing 3
Database Link:	<a href="#">Q8BHI4</a>
Background:	Is expressed in several structures, including central nervous system; dorsal root ganglion; early conceptus; genitourinary system; and tooth. Orthologous to human KBTBD3 (kelch repeat and BTB domain containing 3).
Synonyms:	BKLHD3; FLJ30685



[View online »](#)

**Product images:**

Western blot analysis of lysates from PC-3 cells