

Product datasheet for **TA377686**

Histone acetyltransferase MYST3 (KAT6A) Rabbit Polyclonal Antibody

Product data:

Product Type:	Primary Antibodies
Applications:	ICC/IF, IHC, WB
Recommended Dilution:	WB,1:500 - 1:2000 IHC,1:50 - 1:200 IF,1:50 - 1:200
Reactivity:	Human, Mouse, Rat
Modifications:	Unmodified
Host:	Rabbit
Isotype:	IgG
Clonality:	Polyclonal
Immunogen:	Recombinant fusion protein containing a sequence corresponding to amino acids 800-1000 of human KAT6A (NP_001092883.1).
Formulation:	Buffer: PBS with 0.02% sodium azide,50% glycerol,pH7.3.
Concentration:	lot specific
Purification:	Affinity purification
Conjugation:	Unconjugated
Storage:	Store at -20°C. Avoid freeze / thaw cycles.
Stability:	Shelf life: one year from despatch.
Predicted Protein Size:	225kDa
Gene Name:	lysine acetyltransferase 6A
Database Link:	Entrez Gene 7994 Human Q92794



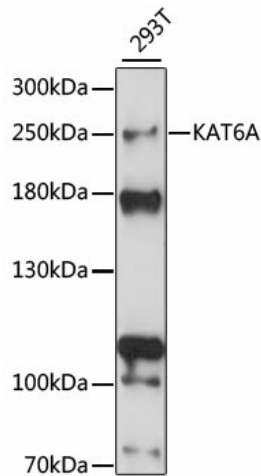
[View online »](#)

Background:

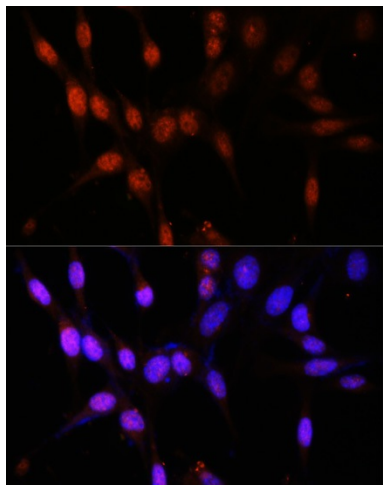
This gene encodes a member of the MOZ, YBFR2, SAS2, TIP60 family of histone acetyltransferases. The protein is composed of a nuclear localization domain, a double C2H2 zinc finger domain that binds to acetylated histone tails, a histone acetyl-transferase domain, a glutamate/aspartate-rich region, and a serine- and methionine-rich transactivation domain. It is part of a complex that acetylates lysine-9 residues in histone 3, and in addition, it acts as a co-activator for several transcription factors. Allelic variants of this gene are associated with autosomal dominant mental retardation-32. Alternative splicing results in multiple transcript variants.

Synonyms:

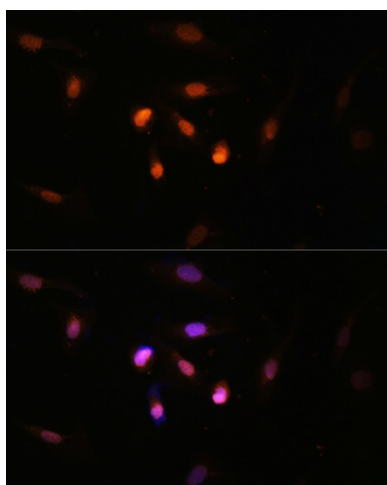
1500036M03; 9930021N24Rik; MOZ; Moz; Myst3; Runxbp2; Zfp220; Znf220

Product images:

Western blot analysis of extracts of 293T cells, using KAT6A antibody (TA377686) at 1:1000 dilution. | Secondary antibody: HRP Goat Anti-Rabbit IgG (H+L) at 1:10000 dilution. | Lysates/proteins: 25ug per lane. | Blocking buffer: 3% nonfat dry milk in TBST. | Detection: ECL Basic Kit. | Exposure time: 10s.



Immunofluorescence analysis of NIH/3T3 cells using KAT6A antibody (TA377686) at dilution of 1:100. Blue: DAPI for nuclear staining.



Immunofluorescence analysis of U2OS cells using KAT6A antibody (TA377686) at dilution of 1:100. Blue: DAPI for nuclear staining.