

Product datasheet for **TA377681**

KIAA1310 (KANSL3) Rabbit Polyclonal Antibody

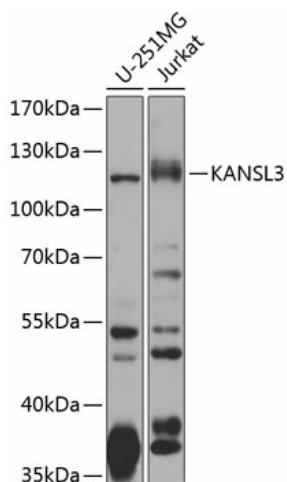
Product data:

Product Type:	Primary Antibodies
Applications:	WB
Recommended Dilution:	WB,1:500 - 1:2000
Reactivity:	Human
Modifications:	Unmodified
Host:	Rabbit
Isotype:	IgG
Clonality:	Polyclonal
Immunogen:	Recombinant fusion protein containing a sequence corresponding to amino acids 1-200 of human KANSL3 (NP_001108488.1).
Formulation:	Buffer: PBS with 0.02% sodium azide,50% glycerol,pH7.3.
Concentration:	lot specific
Purification:	Affinity purification
Conjugation:	Unconjugated
Storage:	Store at -20°C. Avoid freeze / thaw cycles.
Stability:	Shelf life: one year from despatch.
Predicted Protein Size:	16kDa/58kDa/80kDa/83kDa/93kDa/95kDa
Gene Name:	KAT8 regulatory NSL complex subunit 3
Database Link:	Entrez Gene 55683 Human Q9P2N6
Background:	As part of the NSL complex it is involved in acetylation of nucleosomal histone H4 on several lysine residues and therefore may be involved in the regulation of transcription.
Synonyms:	4632411B12Rik; 4932435K23; AI431067; AI647574; C85723; Kiaa1310; mKIAA1310; RGD1309220



[View online »](#)

Product images:



Western blot analysis of extracts of various cell lines, using KANSL3 antibody (TA377681) at 1:1000 dilution. | Secondary antibody: HRP Goat Anti-Rabbit IgG (H+L) at 1:10000 dilution. | Lysates/proteins: 25ug per lane. | Blocking buffer: 3% nonfat dry milk in TBST. | Detection: ECL Basic Kit . | Exposure time: 15s.