

Product datasheet for **TA377666S**

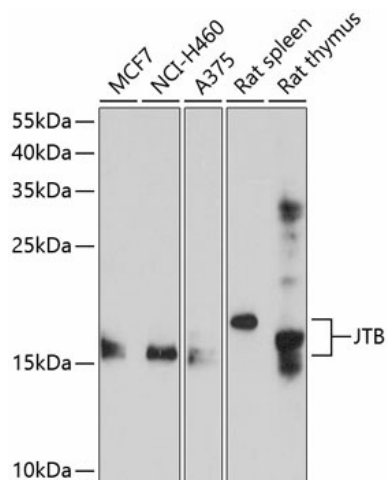
JTB Rabbit Polyclonal Antibody

Product data:

Product Type:	Primary Antibodies
Applications:	ELISA, WB
Recommended Dilution:	WB, 1:500 - 1:2000 ELISA, Recommended starting concentration is 1 µg/mL. Please optimize the concentration based on your specific assay requirements.
Reactivity:	Human, Rat
Modifications:	Unmodified
Host:	Rabbit
Isotype:	IgG
Clonality:	Polyclonal
Formulation:	Buffer: PBS with 0.02% sodium azide, 50% glycerol, pH 7.3.
Concentration:	lot specific
Purification:	Affinity purification
Conjugation:	Unconjugated
Storage:	Store at -20°C. Avoid freeze / thaw cycles.
Stability:	Shelf life: one year from despatch.
Predicted Protein Size:	16kDa
Gene Name:	jumping translocation breakpoint
Database Link:	Entrez Gene 10899 Human O76095
Background:	Enables protein kinase binding activity. Involved in mitotic cytokinesis and positive regulation of protein kinase activity. Located in cytoplasm and midbody. Colocalizes with centrosome and spindle.
Synonyms:	hJT; HJTb; HSPC222; PAR



[View online »](#)

Product images:

Western blot analysis of various lysates using JTB Rabbit pAb ([TA377666]) at 1:1000 dilution.
Secondary antibody: HRP-conjugated Goat anti-Rabbit IgG (H+L) (AS014) at 1:10000 dilution.
Lysates/proteins: 25µg per lane.
Blocking buffer: 3% nonfat dry milk in TBST.
Detection: ECL Enhanced Kit (RM00021).
Exposure time: 60s.