

Product datasheet for **TA377662S**

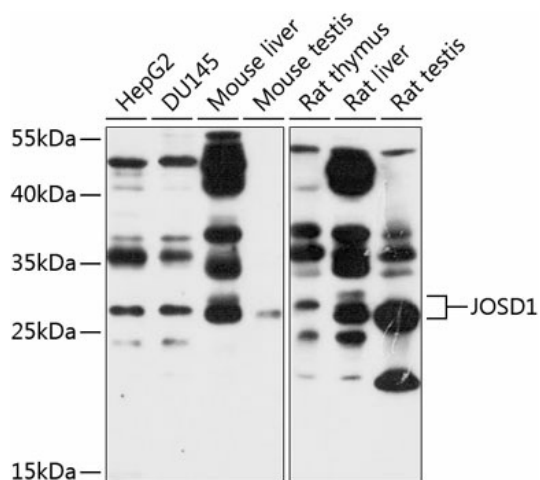
Josephin 1 (JOSD1) Rabbit Polyclonal Antibody

Product data:

Product Type:	Primary Antibodies
Applications:	ELISA, WB
Recommended Dilution:	WB, 1:500 - 1:2000 ELISA, Recommended starting concentration is 1 µg/mL. Please optimize the concentration based on your specific assay requirements.
Reactivity:	Human, Mouse, Rat
Modifications:	Unmodified
Host:	Rabbit
Isotype:	IgG
Clonality:	Polyclonal
Formulation:	Buffer: PBS with 0.02% sodium azide, 50% glycerol, pH 7.3.
Concentration:	lot specific
Purification:	Affinity purification
Conjugation:	Unconjugated
Storage:	Store at -20°C. Avoid freeze / thaw cycles.
Stability:	Shelf life: one year from despatch.
Predicted Protein Size:	23kDa
Gene Name:	Josephin domain containing 1
Database Link:	Entrez Gene 9929 Human Q15040
Background:	Predicted to enable thiol-dependent deubiquitinase. Predicted to be involved in protein deubiquitination. Located in membrane.
Synonyms:	dj508i15.2; JSPH1; KIAA0063



[View online »](#)

Product images:


Western blot analysis of various lysates using JOSD1 Rabbit pAb (TA377662S) at 1:1000 dilution. Secondary antibody: HRP-conjugated Goat anti-Rabbit IgG (H+L) (AS014) at 1:10000 dilution. Lysates/proteins: 25µg per lane. Blocking buffer: 3% nonfat dry milk in TBST. Detection: ECL Basic Kit (RM00020). Exposure time: 10s.