

Product datasheet for **TA377661**

PP14397 (JMJD8) Rabbit Polyclonal Antibody

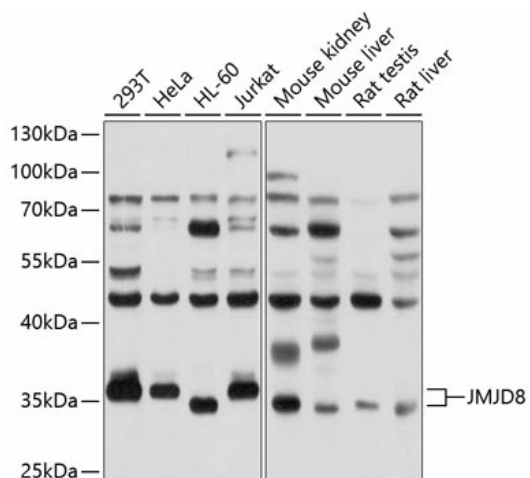
Product data:

Product Type:	Primary Antibodies
Applications:	WB
Recommended Dilution:	WB,1:500 - 1:2000
Reactivity:	Human, Mouse, Rat
Modifications:	Unmodified
Host:	Rabbit
Isotype:	IgG
Clonality:	Polyclonal
Immunogen:	Recombinant fusion protein containing a sequence corresponding to amino acids 1-285 of human JMJD8 (NP_001005920.2).
Formulation:	Buffer: PBS with 0.02% sodium azide,50% glycerol,pH7.3.
Concentration:	lot specific
Purification:	Affinity purification
Conjugation:	Unconjugated
Storage:	Store at -20°C. Avoid freeze / thaw cycles.
Stability:	Shelf life: one year from despatch.
Predicted Protein Size:	33kDa/36kDa
Gene Name:	jumonji domain containing 8
Database Link:	Entrez Gene 339123 Human Q96S16
Background:	Functions as a positive regulator of TNF-induced NF-kappa-B signaling. Regulates angiogenesis and cellular metabolism through interaction with PKM.
Synonyms:	C16orf20; PP14397



[View online »](#)

Product images:



Western blot analysis of extracts of various cell lines, using JMJD8 antibody (TA377661) at 1:1000 dilution. | Secondary antibody: HRP Goat Anti-Rabbit IgG (H+L) at 1:10000 dilution. | Lysates/proteins: 25ug per lane. | Blocking buffer: 3% nonfat dry milk in TBST. | Detection: ECL Basic Kit. | Exposure time: 3s.