

## Product datasheet for **TA377660S**

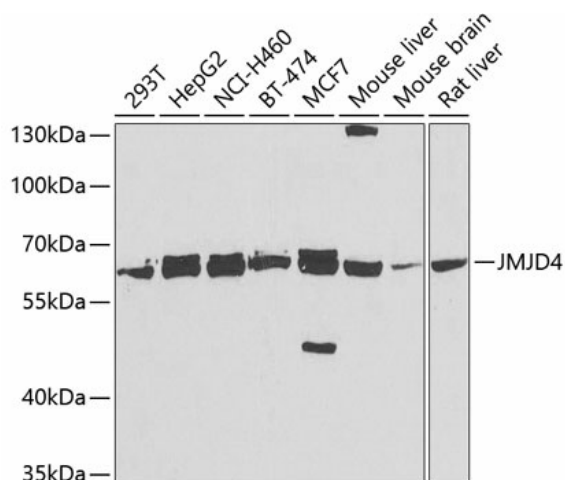
### JMJD4 Rabbit Polyclonal Antibody

#### Product data:

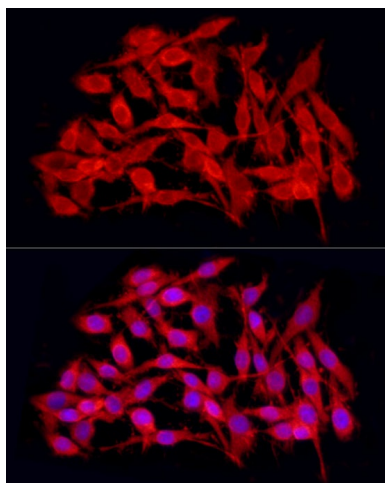
Product Type:	Primary Antibodies
Applications:	ELISA, ICC/IF, WB
Recommended Dilution:	WB, 1:500 - 1:1000 IF/ICC, 1:50 - 1:200 ELISA, Recommended starting concentration is 1 µg/mL. Please optimize the concentration based on your specific assay requirements.
Reactivity:	Human, Mouse, Rat
Modifications:	Unmodified
Host:	Rabbit
Isotype:	IgG
Clonality:	Polyclonal
Formulation:	Buffer: PBS with 0.02% sodium azide, 50% glycerol, pH 7.3.
Concentration:	lot specific
Purification:	Affinity purification
Conjugation:	Unconjugated
Storage:	Store at -20°C. Avoid freeze / thaw cycles.
Stability:	Shelf life: one year from despatch.
Predicted Protein Size:	52kDa
Gene Name:	jumonji domain containing 4
Database Link:	<a href="#">Entrez Gene 65094 Human Q9H9V9</a>
Background:	Enables 2-oxoglutarate-dependent dioxygenase activity. Involved in positive regulation of translational termination and protein hydroxylation. Located in cytoplasm.
Synonyms:	FLJ12517; MGC129896



[View online »](#)

**Product images:**


Western blot analysis of various lysates



Immunofluorescence analysis of PC-12 cells using JMJD4 Rabbit pAb ([TA377660]) at dilution of 1:100 (40x lens). Secondary antibody: Cy3-conjugated Goat anti-Rabbit IgG (H+L) (AS007) at 1:500 dilution. Blue: DAPI for nuclear staining.