

Product datasheet for **TA377657S**

JARID2 Rabbit Polyclonal Antibody

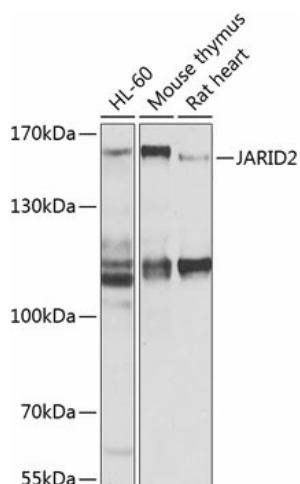
Product data:

Product Type:	Primary Antibodies
Applications:	ELISA, WB
Recommended Dilution:	WB, 1:500 - 1:2000 ELISA, Recommended starting concentration is 1 µg/mL. Please optimize the concentration based on your specific assay requirements.
Reactivity:	Human, Mouse, Rat
Modifications:	Unmodified
Host:	Rabbit
Isotype:	IgG
Clonality:	Polyclonal
Formulation:	Buffer: PBS with 0.02% sodium azide, 50% glycerol, pH 7.3.
Concentration:	lot specific
Purification:	Affinity purification
Conjugation:	Unconjugated
Storage:	Store at -20°C. Avoid freeze / thaw cycles.
Stability:	Shelf life: one year from despatch.
Predicted Protein Size:	139kDa
Gene Name:	jumonji and AT-rich interaction domain containing 2
Database Link:	Entrez Gene 3720 Human Q92833
Background:	This gene encodes a Jumonji- and AT-rich interaction domain (ARID)-domain-containing protein. The encoded protein is a DNA-binding protein that functions as a transcriptional repressor. This protein interacts with the Polycomb repressive complex 2 (PRC2) which plays an essential role in regulating gene expression during embryonic development. This protein facilitates the recruitment of the PRC2 complex to target genes. Alternate splicing results in multiple transcript variants. Mutations in this gene are associated with chronic myeloid malignancies.
Synonyms:	JMJ



[View online »](#)

Product images:



Western blot analysis of various lysates using JARID2 Rabbit pAb ([TA377657]) at 1:1000 dilution.

Secondary antibody: HRP-conjugated Goat anti-Rabbit IgG (H+L) (AS014) at 1:10000 dilution.

Lysates/proteins: 25µg per lane.

Blocking buffer: 3% nonfat dry milk in TBST.

Detection: ECL Basic Kit (RM00020).

Exposure time: 10s.