

Product datasheet for **TA377637**

Influenza Virus NS1A Binding Protein (IVNS1ABP) Rabbit Polyclonal Antibody

Product data:

Product Type:	Primary Antibodies
Applications:	WB
Recommended Dilution:	WB,1:500 - 1:2000
Reactivity:	Human, Mouse, Rat
Modifications:	Unmodified
Host:	Rabbit
Isotype:	IgG
Clonality:	Polyclonal
Immunogen:	Recombinant fusion protein containing a sequence corresponding to amino acids 1-300 of human IVNS1ABP (NP_006460.2).
Formulation:	Buffer: PBS with 0.02% sodium azide,50% glycerol,pH7.3.
Concentration:	lot specific
Purification:	Affinity purification
Conjugation:	Unconjugated
Storage:	Store at -20°C. Avoid freeze / thaw cycles.
Stability:	Shelf life: one year from despatch.
Predicted Protein Size:	71kDa
Gene Name:	influenza virus NS1A binding protein
Database Link:	Entrez Gene 10625 Human Q9Y6Y0



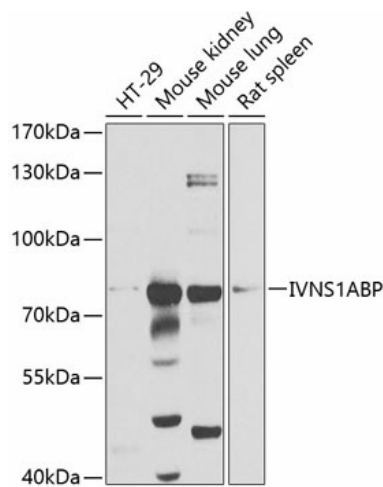
[View online »](#)

Background:

Involved in many cell functions, including pre-mRNA splicing, the aryl hydrocarbon receptor (AHR pathway, F-actin organization and protein ubiquitination. Plays a role in the dynamic organization of the actin skeleton as a stabilizer of actin filaments by association with F-actin through Kelch repeats (By similarity. Protects cells from cell death induced by actin destabilization (By similarity. Functions as modifier of the AHR/Aryl hydrocarbon receptor pathway increasing the concentration of AHR available to activate transcription. In addition, functions as a negative regulator of BCR(KLHL20 E3 ubiquitin ligase complex to prevent ubiquitin-mediated proteolysis of PML and DAPK1, two tumor suppressors. Inhibits pre-mRNA splicing (in vitro).

Synonyms:

ARA3; DKFZp686K06216; FLARA3; FLJ10069; FLJ10411; FLJ10962; FLJ35593; FLJ36593; HSPC068; KIAA0850; ND1; NS-1; NS1; NS1-BP; NS1BP

Product images:


Western blot analysis of extracts of various cell lines, using IVNS1ABP antibody (TA377637) at 1:1000 dilution. | Secondary antibody: HRP Goat Anti-Rabbit IgG (H+L) at 1:10000 dilution. | Lysates/proteins: 25ug per lane. | Blocking buffer: 3% nonfat dry milk in TBST. | Detection: ECL Basic Kit . | Exposure time: 30s.