

## Product datasheet for **TA377622**

### ITLN1 Rabbit Polyclonal Antibody

#### Product data:

Product Type:	Primary Antibodies
Applications:	ICC/IF, IHC, WB
Recommended Dilution:	WB,1:500 - 1:2000 IHC,1:50 - 1:200 IF,1:50 - 1:200
Reactivity:	Mouse, Rat
Modifications:	Unmodified
Host:	Rabbit
Isotype:	IgG
Clonality:	Polyclonal
Immunogen:	Recombinant fusion protein containing a sequence corresponding to amino acids 19-313 of human ITLN1 (NP_060095.2).
Formulation:	Buffer: PBS with 0.02% sodium azide,50% glycerol,pH7.3.
Concentration:	lot specific
Purification:	Affinity purification
Conjugation:	Unconjugated
Storage:	Store at -20°C. Avoid freeze / thaw cycles.
Stability:	Shelf life: one year from despatch.
Predicted Protein Size:	34kDa
Gene Name:	intelectin 1
Database Link:	<a href="#">Q8WWA0</a>



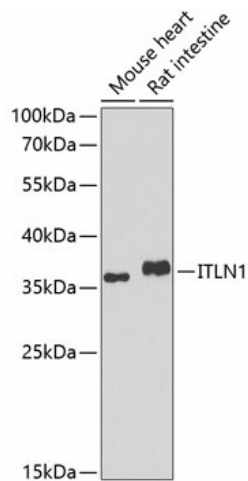
[View online »](#)

**Background:**

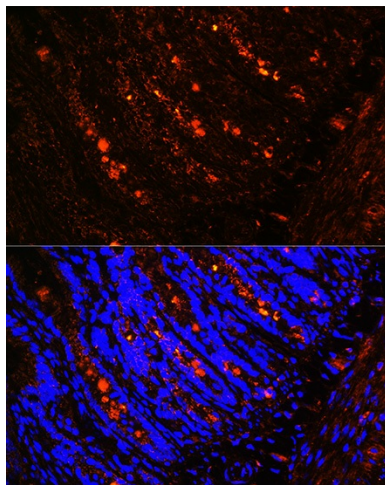
Intelectin-1 (ITLN1) is a secreted protein and contains 1 fibrinogen C-terminal domain. Intelectin-1 is a 40 kDa Ca-dependent galactofuranose-binding lectin that is not a C-type lectin. It is expressed on multiple cell types and appears to participate in insulin signaling and microbe recognition. The protein has no effect on basal glucose uptake but enhances insulin-stimulated glucose uptake in adipocytes. It increases AKT phosphorylation in the absence and presence of insulin and it may play a role in the defense system against microorganisms. It also may specifically recognize carbohydrate chains of pathogens and bacterial components containing galactofuranosyl residues, in a calcium-dependent manner.

**Synonyms:**

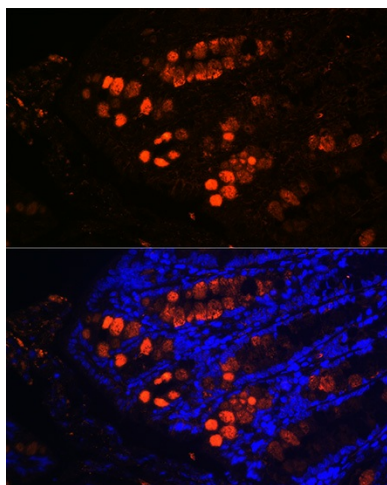
FLJ20022; hIntL; HL-1; HL1; intelectin; INTL; ITLN; ITLN-1; LFR; omentin

**Product images:**

Western blot analysis of extracts of various cell lines, using ITLN1 antibody (TA377622) at 1:1000 dilution. | Secondary antibody: HRP Goat Anti-Rabbit IgG (H+L) at 1:10000 dilution. | Lysates/proteins: 25ug per lane. | Blocking buffer: 3% nonfat dry milk in TBST. | Detection: ECL Basic Kit. | Exposure time: 90s.



Immunofluorescence analysis of rat intestine using ITLN1 Rabbit pAb (TA377622) at dilution of 1:100 (40x lens). Blue: DAPI for nuclear staining.



Immunofluorescence analysis of mouse colon using ITLN1 Rabbit pAb (TA377622) at dilution of 1:100 (40x lens). Blue: DAPI for nuclear staining.