

Product datasheet for **TA377574S**

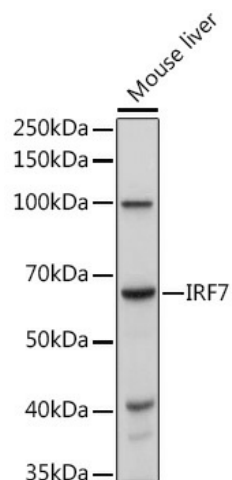
IRF7 Rabbit Polyclonal Antibody

Product data:

Product Type:	Primary Antibodies
Applications:	ELISA, WB
Recommended Dilution:	WB, 1:500 - 1:1000 ELISA, Recommended starting concentration is 1 µg/mL. Please optimize the concentration based on your specific assay requirements.
Reactivity:	Mouse
Modifications:	Unmodified
Host:	Rabbit
Isotype:	IgG
Clonality:	Polyclonal
Formulation:	Buffer: PBS with 0.02% sodium azide, 50% glycerol, pH 7.3.
Concentration:	lot specific
Purification:	Affinity purification
Conjugation:	Unconjugated
Storage:	Store at -20°C. Avoid freeze / thaw cycles.
Stability:	Shelf life: one year from despatch.
Predicted Protein Size:	54kDa
Gene Name:	interferon regulatory factor 7
Database Link:	Q92985
Background:	This gene encodes interferon regulatory factor 7, a member of the interferon regulatory transcription factor (IRF) family. It has been shown to play a role in the transcriptional activation of virus-inducible cellular genes, including interferon beta chain genes. Inducible expression of IRF7 is largely restricted to lymphoid tissue. The encoded protein plays an important role in the innate immune response against DNA and RNA viruses.
Synonyms:	IRF-7; IRF-7H; IRF7A; OTTHUMP00000162886; OTTHUMP00000162888



[View online »](#)

Product images:


Western blot analysis of lysates from Mouse liver