

Product datasheet for **TA377548**

Importin 9 (IPO9) Rabbit Polyclonal Antibody

Product data:

Product Type:	Primary Antibodies
Applications:	WB
Recommended Dilution:	WB,1:500 - 1:2000 IF,1:50 - 1:100
Reactivity:	Human, Mouse
Modifications:	Unmodified
Host:	Rabbit
Isotype:	IgG
Clonality:	Polyclonal
Immunogen:	Recombinant fusion protein containing a sequence corresponding to amino acids 827-1041 of human IPO9 (NP_060555.2).
Formulation:	Buffer: PBS with 0.02% sodium azide,50% glycerol,pH7.3.
Concentration:	lot specific
Purification:	Affinity purification
Conjugation:	Unconjugated
Storage:	Store at -20°C. Avoid freeze / thaw cycles.
Stability:	Shelf life: one year from despatch.
Predicted Protein Size:	115kDa
Gene Name:	importin 9
Database Link:	Entrez Gene 55705 Human Q96P70



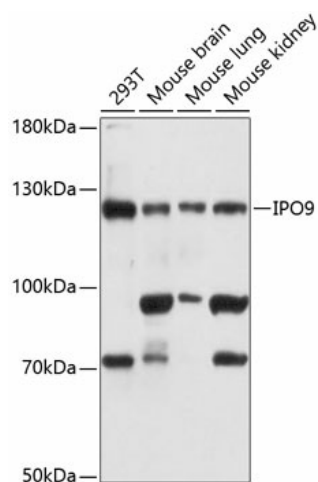
[View online »](#)

Background:

Functions in nuclear protein import as nuclear transport receptor. Serves as receptor for nuclear localization signals (NLS in cargo substrates. Is thought to mediate docking of the importin/substrate complex to the nuclear pore complex (NPC through binding to nucleoporin and the complex is subsequently translocated through the pore by an energy requiring, Ran-dependent mechanism. At the nucleoplasmic side of the NPC, Ran binds to the importin, the importin/substrate complex dissociates and importin is re-exported from the nucleus to the cytoplasm where GTP hydrolysis releases Ran. The directionality of nuclear import is thought to be conferred by an asymmetric distribution of the GTP- and GDP-bound forms of Ran between the cytoplasm and nucleus. Mediates the nuclear import of RPS7, RPL18A, RPL6, histone H2A, histone H2B and histone. Prevents the cytoplasmic aggregation of RPS7 and RPL18A by shielding exposed basic domains. Mediates the nuclear import of actin (By similarity).

Synonyms:

DKFZp761M1547; FLJ10402; IMP9; KIAA1192; RANBP9

Product images:

Western blot analysis of extracts of various cell lines, using IPO9 antibody (TA377548) at 1:3000 dilution. | Secondary antibody: HRP Goat Anti-Rabbit IgG (H+L) at 1:10000 dilution. | Lysates/proteins: 25ug per lane. | Blocking buffer: 3% nonfat dry milk in TBST. | Detection: ECL Basic Kit. | Exposure time: 5s.