

Product datasheet for **TA377530S**

Insulin Receptor R (INSRR) Rabbit Polyclonal Antibody

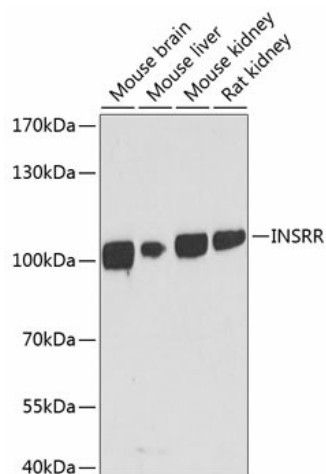
Product data:

Product Type:	Primary Antibodies
Applications:	ELISA, WB
Recommended Dilution:	WB, 1:500 - 1:1000 ELISA, Recommended starting concentration is 1 µg/mL. Please optimize the concentration based on your specific assay requirements.
Reactivity:	Mouse, Rat
Modifications:	Unmodified
Host:	Rabbit
Isotype:	IgG
Clonality:	Polyclonal
Formulation:	Buffer: PBS with 0.02% sodium azide, 50% glycerol, pH 7.3.
Concentration:	lot specific
Purification:	Affinity purification
Conjugation:	Unconjugated
Storage:	Store at -20°C. Avoid freeze / thaw cycles.
Stability:	Shelf life: one year from despatch.
Predicted Protein Size:	144kDa
Gene Name:	insulin receptor related receptor
Database Link:	P14616
Background:	Enables transmembrane receptor protein tyrosine kinase activity. Involved in actin cytoskeleton reorganization; cellular response to alkaline pH; and protein autophosphorylation. Part of receptor complex.
Synonyms:	IRR



[View online »](#)

Product images:



Western blot analysis of various lysates using INSRR Rabbit pAb (TA377530) at 1:1000 dilution. Secondary antibody: HRP-conjugated Goat anti-Rabbit IgG (H+L) (AS014) at 1:10000 dilution. Lysates / proteins: 25 µg per lane. Blocking buffer: 3 % nonfat dry milk in TBST. Detection: ECL Basic Kit (RM00020). Exposure time: 90s.