

Product datasheet for **TA377522**

Insulin (INS) Rabbit Polyclonal Antibody

Product data:

Product Type:	Primary Antibodies
Applications:	ICC/IF, IHC, WB
Recommended Dilution:	WB,1:500 - 1:2000 IHC,1:50 - 1:200 IF,1:50 - 1:200
Reactivity:	Human, Mouse, Rat
Modifications:	Unmodified
Host:	Rabbit
Isotype:	IgG
Clonality:	Polyclonal
Immunogen:	Recombinant fusion protein containing a sequence corresponding to amino acids 1-110 of human INS (NP_000198.1).
Formulation:	Buffer: PBS with 0.02% sodium azide,50% glycerol,pH7.3.
Concentration:	lot specific
Purification:	Affinity purification
Conjugation:	Unconjugated
Storage:	Store at -20°C. Avoid freeze / thaw cycles.
Stability:	Shelf life: one year from despatch.
Predicted Protein Size:	11kDa/21kDa
Gene Name:	insulin
Database Link:	Entrez Gene 3630 Human P01308



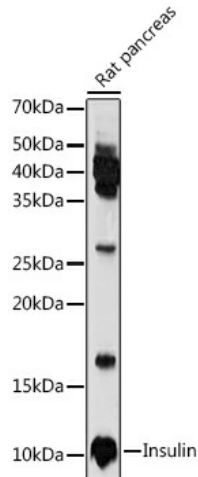
[View online »](#)

Background:

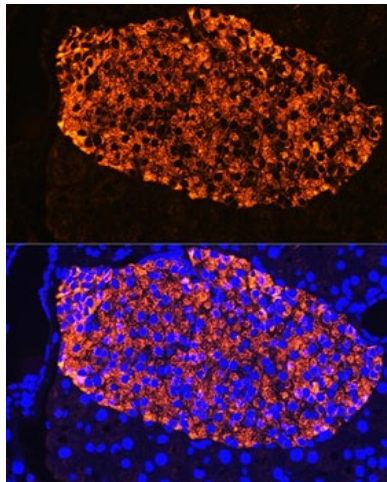
After removal of the precursor signal peptide, proinsulin is post-translationally cleaved into three peptides: the B chain and A chain peptides, which are covalently linked via two disulfide bonds to form insulin, and C-peptide. Binding of insulin to the insulin receptor (INSR) stimulates glucose uptake. A multitude of mutant alleles with phenotypic effects have been identified. There is a read-through gene, INS-IGF2, which overlaps with this gene at the 5' region and with the IGF2 gene at the 3' region. Alternative splicing results in multiple transcript variants.

Synonyms:

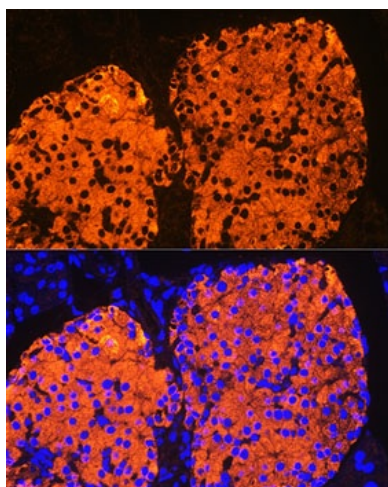
ILPR; insulin; IRDN; OTTHUMP00000011162; OTTHUMP00000196038; proinsulin

Product images:

Western blot analysis of extracts of Rat pancreas, using Insulin antibody (TA377522) at 1:1000 dilution. | Secondary antibody: HRP Goat Anti-Rabbit IgG (H+L) at 1:10000 dilution. | Lysates/proteins: 25ug per lane. | Blocking buffer: 3% nonfat dry milk in TBST. | Detection: ECL Enhanced Kit. | Exposure time: 180s.



Immunofluorescence analysis of Rat pancreas using Insulin Rabbit pAb (TA377522) at dilution of 1:100. Blue: DAPI for nuclear staining.



Immunofluorescence analysis of Mouse pancreatic islet using Insulin Rabbit pAb (TA377522) at dilution of 1:100. Blue: DAPI for nuclear staining.