

## Product datasheet for **TA377518S**

### INPP5E Rabbit Polyclonal Antibody

#### Product data:

Product Type:	Primary Antibodies
Applications:	ICC/IF, WB
Recommended Dilution:	WB,1:500 - 1:2000 IF,1:50 - 1:200
Reactivity:	Human, Mouse, Rat
Modifications:	Unmodified
Host:	Rabbit
Isotype:	IgG
Clonality:	Polyclonal
Immunogen:	Recombinant fusion protein containing a sequence corresponding to amino acids 510-630 of human INPP5E (NP_063945.2).
Formulation:	Buffer: PBS with 0.02% sodium azide,50% glycerol,pH7.3.
Concentration:	lot specific
Purification:	Affinity purification
Conjugation:	Unconjugated
Storage:	Store at -20°C. Avoid freeze / thaw cycles.
Stability:	Shelf life: one year from despatch.
Predicted Protein Size:	66kDa/70kDa
Gene Name:	inositol polyphosphate-5-phosphatase E
Database Link:	<a href="#">Entrez Gene 56623 Human</a> <a href="#">Q9NRR6</a>



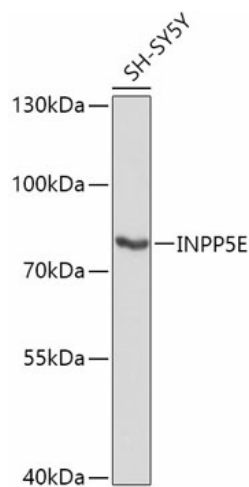
[View online »](#)

**Background:**

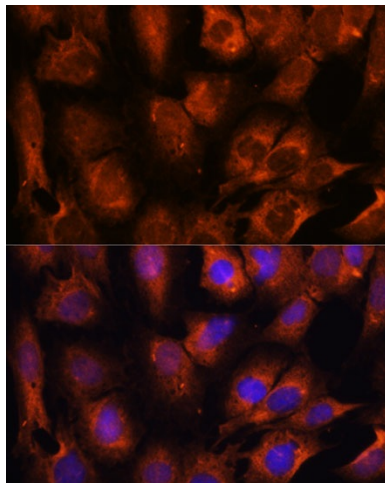
The protein encoded by this gene is an inositol 1,4,5-trisphosphate (InsP3) 5-phosphatase. InsP3 5-phosphatases hydrolyze Ins(1,4,5)P3, which mobilizes intracellular calcium and acts as a second messenger mediating cell responses to various stimulation. Studies of the mouse counterpart suggest that this protein may hydrolyze phosphatidylinositol 3,4,5-trisphosphate and phosphatidylinositol 3,5-bisphosphate on the cytoplasmic Golgi membrane and thereby regulate Golgi-vesicular trafficking. Mutations in this gene cause Joubert syndrome; a clinically and genetically heterogeneous group of disorders characterized by midbrain-hindbrain malformation and various associated ciliopathies that include retinal dystrophy, nephronophthisis, liver fibrosis and polydactyly. Alternative splicing results in multiple transcript variants encoding different isoforms. [provided by RefSeq, Jan 2016]

**Synonyms:**

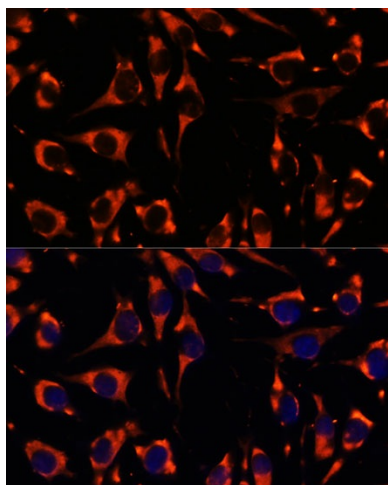
CORS1; JBTS1; MGC117201; MORMS; PPI5PIV

**Product images:**

Western blot analysis of extracts of SH-SY5Y cells, using INPP5E antibody ([TA377518]) at 1:1000 dilution. | Secondary antibody: HRP Goat Anti-Rabbit IgG (H+L) at 1:10000 dilution. | Lysates/proteins: 25ug per lane. | Blocking buffer: 3% nonfat dry milk in TBST. | Detection: ECL Basic Kit . | Exposure time: 3s.



Immunofluorescence analysis of C6 cells using INPP5E antibody ([TA377518]) at dilution of 1:100. Blue: DAPI for nuclear staining.



Immunofluorescence analysis of L929 cells using INPP5E antibody ([TA377518]) at dilution of 1:100. Blue: DAPI for nuclear staining.