

Product datasheet for **TA377509**

Inhibin beta C chain (INHBC) Rabbit Polyclonal Antibody

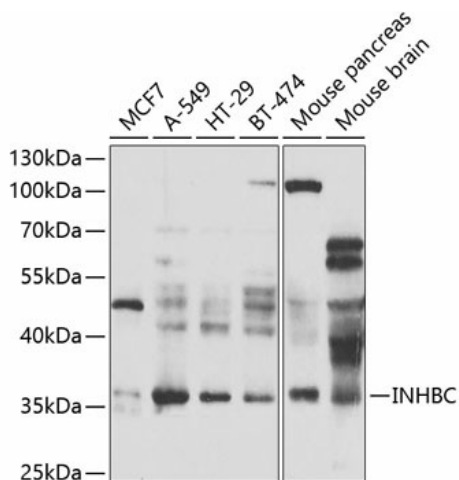
Product data:

Product Type:	Primary Antibodies
Applications:	WB
Recommended Dilution:	WB,1:500 - 1:2000
Reactivity:	Human, Mouse, Rat
Modifications:	Unmodified
Host:	Rabbit
Isotype:	IgG
Clonality:	Polyclonal
Immunogen:	Recombinant fusion protein containing a sequence corresponding to amino acids 103-352 of human INHBC (NP_005529.1).
Formulation:	Buffer: PBS with 0.02% sodium azide,50% glycerol,pH7.3.
Concentration:	lot specific
Purification:	Affinity purification
Conjugation:	Unconjugated
Storage:	Store at -20°C. Avoid freeze / thaw cycles.
Stability:	Shelf life: one year from despatch.
Predicted Protein Size:	38kDa
Gene Name:	inhibin beta C subunit
Database Link:	Entrez Gene 3626 Human P55103
Background:	This gene encodes a member of the TGF-beta (transforming growth factor-beta) superfamily of proteins. The encoded preproprotein is proteolytically processed to generate a subunit of homodimeric and heterodimeric activin complexes. The heterodimeric complex may function in the inhibition of activin A signaling. Transgenic mice overexpressing this gene exhibit defects in testis, liver and prostate.
Synonyms:	IHBC



[View online »](#)

Product images:



Western blot analysis of extracts of various cell lines, using INHBC antibody (TA377509) at 1:1000 dilution. Secondary antibody: HRP Goat Anti-Rabbit IgG (H+L) at 1:10000 dilution. Lysates/proteins: 25ug per lane. Blocking buffer: 3% nonfat dry milk in TBST. Detection: ECL Enhanced Kit. Exposure time: 90s.