

Product datasheet for **TA377506S**

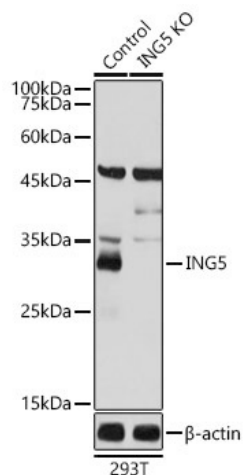
ING5 Rabbit Polyclonal Antibody

Product data:

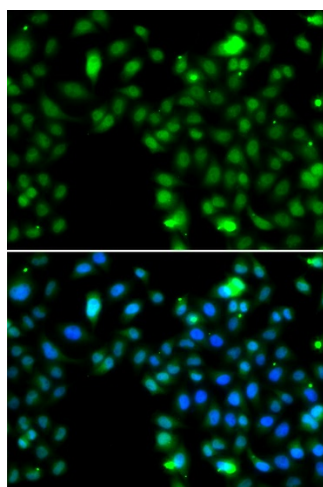
Product Type:	Primary Antibodies
Applications:	ELISA, ICC/IF, WB
Recommended Dilution:	WB, 1:500 - 1:1000 IF/ICC, 1:50 - 1:100 ELISA, Recommended starting concentration is 1 µg/mL. Please optimize the concentration based on your specific assay requirements.
Reactivity:	Human
Modifications:	Unmodified
Host:	Rabbit
Isotype:	IgG
Clonality:	Polyclonal
Formulation:	Buffer: PBS with 0.02% sodium azide, 50% glycerol, pH 7.3.
Concentration:	lot specific
Purification:	Affinity purification
Conjugation:	Unconjugated
Storage:	Store at -20°C. Avoid freeze / thaw cycles.
Stability:	Shelf life: one year from despatch.
Predicted Protein Size:	28kDa
Gene Name:	inhibitor of growth family member 5
Database Link:	Entrez Gene 84289 Human Q8WYH8
Background:	This gene encodes a tumor suppressor protein that inhibits cell growth and induces apoptosis. This protein contains a PHD-type zinc finger. It interacts with tumor suppressor p53 and p300, a component of the histone acetyl transferase complex, suggesting a role in transcriptional regulation. Alternative splicing and the use of multiple promoters and 3' terminal exons results in multiple transcript variants.
Synonyms:	FLJ23842; p28ING5


[View online »](#)

Product images:



Western blot analysis of lysates from wild type (WT) and ING5 knockout (KO) 293T cells



Immunofluorescence analysis of MCF-7 cells using [KO Validated] ING5 Rabbit pAb ([TA377506]). Secondary antibody: Cy3-conjugated Goat anti-Rabbit IgG (H+L) (AS007) at 1:500 dilution. Blue: DAPI for nuclear staining.