

## Product datasheet for **TA377497**

### IMPDH1 Rabbit Polyclonal Antibody

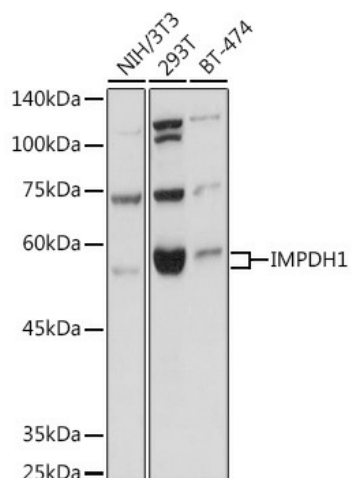
#### Product data:

Product Type:	Primary Antibodies
Applications:	ICC/IF, WB
Recommended Dilution:	WB,1:1000 - 1:2000 IF,1:50 - 1:200
Reactivity:	Human, Mouse, Rat
Modifications:	Unmodified
Host:	Rabbit
Isotype:	IgG
Clonality:	Polyclonal
Immunogen:	Recombinant fusion protein containing a sequence corresponding to amino acids 434-563 of human IMPDH1 (NP_899066.1).
Formulation:	Buffer: PBS with 0.02% sodium azide,50% glycerol,pH7.3.
Concentration:	lot specific
Purification:	Affinity purification
Conjugation:	Unconjugated
Storage:	Store at -20°C. Avoid freeze / thaw cycles.
Stability:	Shelf life: one year from despatch.
Predicted Protein Size:	52kDa/54kDa/55kDa/60kDa/63kDa/64kDa
Gene Name:	IMP (inosine 5'-monophosphate) dehydrogenase 1
Database Link:	<a href="#">Entrez Gene 3614 Human P20839</a>
Background:	The protein encoded by this gene acts as a homotetramer to regulate cell growth. The encoded protein is an enzyme that catalyzes the synthesis of xanthine monophosphate (XMP) from inosine-5'-monophosphate (IMP). This is the rate-limiting step in the de novo synthesis of guanine nucleotides. Defects in this gene are a cause of retinitis pigmentosa type 10 (RP10). Several transcript variants encoding different isoforms have been found for this gene.
Synonyms:	DKFZp781N0678; IMPD; IMPD1; IMPDH-I; LCA11; RP10; sWSS2608

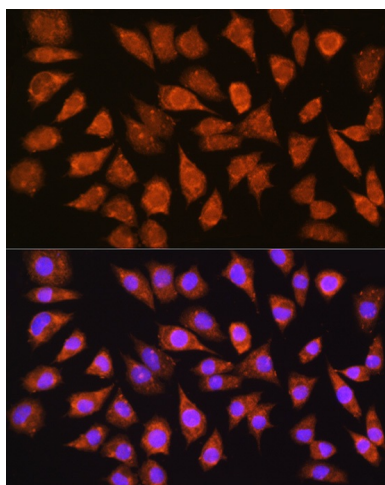


[View online »](#)

## Product images:



Western blot analysis of extracts of various cell lines, using IMPDH1 Rabbit pAb (TA377497) at 1:1000 dilution. | Secondary antibody: HRP Goat Anti-Rabbit IgG (H+L) at 1:10000 dilution. | Lysates/proteins: 25ug per lane. | Blocking buffer: 3% nonfat dry milk in TBST. | Detection: ECL Basic Kit. | Exposure time: 1s.



Immunofluorescence analysis of L929 cells using IMPDH1 Rabbit pAb (TA377497) at dilution of 1:100 (40x lens). Blue: DAPI for nuclear staining.