

## Product datasheet for **TA377470S**

### IL36g Rabbit Polyclonal Antibody

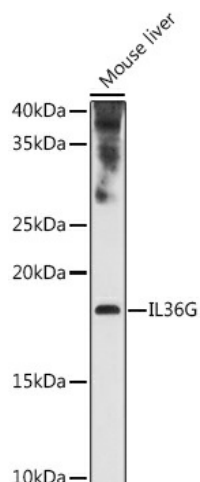
#### Product data:

Product Type:	Primary Antibodies
Applications:	ELISA, ICC/IF, WB
Recommended Dilution:	WB, 1:500 - 1:1000 IF/ICC, 1:50 - 1:200 ELISA, Recommended starting concentration is 1 µg/mL. Please optimize the concentration based on your specific assay requirements.
Reactivity:	Mouse, Human
Modifications:	Unmodified
Host:	Rabbit
Isotype:	IgG
Clonality:	Polyclonal
Formulation:	Buffer: PBS with 0.02% sodium azide, 50% glycerol, pH 7.3.
Concentration:	lot specific
Purification:	Affinity purification
Conjugation:	Unconjugated
Storage:	Store at -20°C. Avoid freeze / thaw cycles.
Stability:	Shelf life: one year from despatch.
Predicted Protein Size:	18kDa
Gene Name:	interleukin 1 family, member 9
Database Link:	<a href="#">Entrez Gene 215257 Mouse</a>
Background:	Enables cytokine activity. Acts upstream of or within negative regulation of myoblast differentiation; negative regulation of myoblast fusion; and positive regulation of interleukin-6 production. Located in extracellular space. Orthologous to human IL36G (interleukin 36 gamma).
Synonyms:	IL-1(EPSILON); IL-1-epsilon; IL-1F9; IL-1H1; IL-1RP2; IL1E; IL1H1; IL1RP2

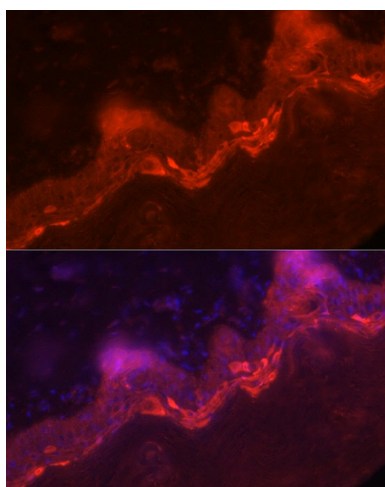


[View online »](#)

## Product images:



Western blot analysis of various lysates using IL36G Rabbit pAb ([TA377470]) at 1:1000 dilution. Secondary antibody: HRP-conjugated Goat anti-Rabbit IgG (H+L) (AS014) at 1:10000 dilution. Lysates/proteins: 25µg per lane. Blocking buffer: 3% nonfat dry milk in TBST. Detection: ECL Enhanced Kit (RM00021). Exposure time: 180s.



Immunofluorescence analysis of paraffin-embedded human skin using IL36G Rabbit pAb ([TA377470]) at dilution of 1:100 (40x lens). Secondary antibody: Cy3-conjugated Goat anti-Rabbit IgG (H+L) (AS007) at 1:500 dilution. Blue: DAPI for nuclear staining.