

Product datasheet for **TA377458S**

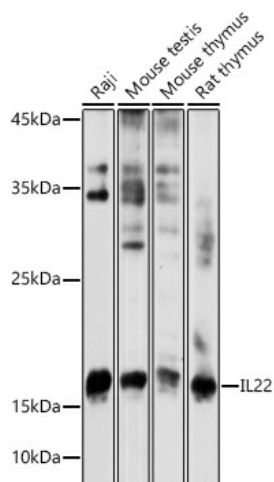
IL22 Rabbit Polyclonal Antibody

Product data:

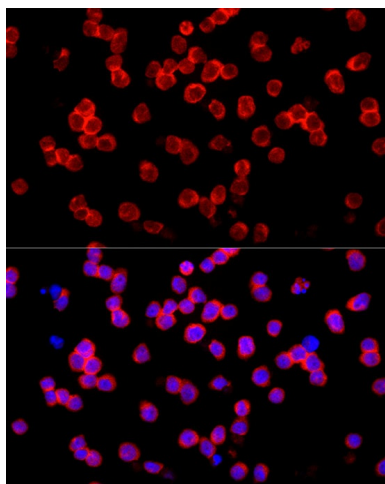
Product Type:	Primary Antibodies
Applications:	ELISA, ICC/IF, WB
Recommended Dilution:	WB, 1:500 - 1:1000 IF/ICC, 1:50 - 1:200 ELISA, Recommended starting concentration is 1 µg/mL. Please optimize the concentration based on your specific assay requirements.
Reactivity:	Human, Mouse, Rat
Modifications:	Unmodified
Host:	Rabbit
Isotype:	IgG
Clonality:	Polyclonal
Formulation:	Buffer: PBS with 0.02% sodium azide, 50% glycerol, pH 7.3.
Concentration:	lot specific
Purification:	Affinity purification
Conjugation:	Unconjugated
Storage:	Store at -20°C. Avoid freeze / thaw cycles.
Stability:	Shelf life: one year from despatch.
Predicted Protein Size:	20kDa
Gene Name:	interleukin 22
Database Link:	Entrez Gene 50616 Human Q9GZX6
Background:	This gene is a member of the IL10 family of cytokines that mediate cellular inflammatory responses. The encoded protein functions in antimicrobial defense at mucosal surfaces and in tissue repair. This protein also has pro-inflammatory properties and plays a role in the pathogenesis of several intestinal diseases. The encoded protein is a crucial cytokine that regulates host immunity in infectious diseases, including COVID-19 (disease caused by SARS-CoV-2).
Synonyms:	IL-21; IL-22; IL-D110; IL-TIF; IL21; ILTIF; MGC79382; MGC79384; TIFa; TIFIL-23; zcyto18


[View online »](#)

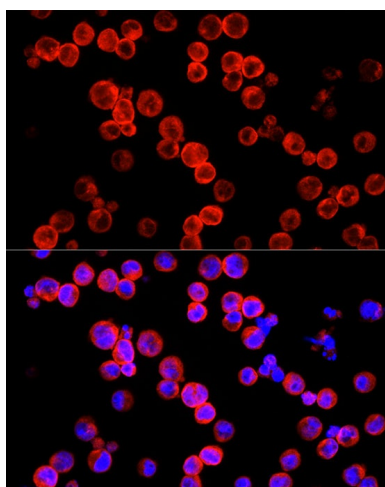
Product images:



Western blot analysis of lysates from HL-60 cells



Immunofluorescence analysis of HL-60 cells using IL22 Rabbit pAb ([TA377458]) at dilution of 1:100 (40x lens). Secondary antibody: Cy3-conjugated Goat anti-Rabbit IgG (H+L) (AS007) at 1:500 dilution. Blue: DAPI for nuclear staining.



Immunofluorescence analysis of Raji cells using IL22 Rabbit pAb ([TA377458]) at dilution of 1:100 (40x lens). Secondary antibody: Cy3-conjugated Goat anti-Rabbit IgG (H+L) (AS007) at 1:500 dilution. Blue: DAPI for nuclear staining.