

Product datasheet for **TA377443**

IL1F10 Rabbit Polyclonal Antibody

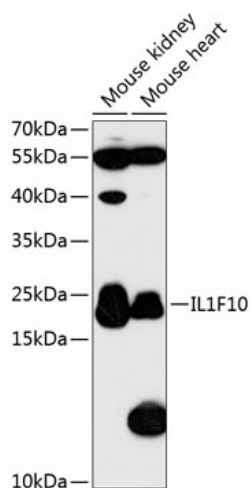
Product data:

Product Type:	Primary Antibodies
Applications:	WB
Recommended Dilution:	WB,1:500 - 1:2000
Reactivity:	Mouse
Modifications:	Unmodified
Host:	Rabbit
Isotype:	IgG
Clonality:	Polyclonal
Immunogen:	Recombinant fusion protein containing a sequence corresponding to amino acids 1-152 of human IL1F10 (NP_115945.4).
Formulation:	Buffer: PBS with 0.02% sodium azide,50% glycerol,pH7.3.
Concentration:	lot specific
Purification:	Affinity purification
Conjugation:	Unconjugated
Storage:	Store at -20°C. Avoid freeze / thaw cycles.
Stability:	Shelf life: one year from despatch.
Predicted Protein Size:	16kDa
Gene Name:	interleukin 1 family member 10 (theta)
Database Link:	Q8WWZ1
Background:	The protein encoded by this gene is a member of the interleukin 1 cytokine family. This gene and eight other interleukin 1 family genes form a cytokine gene cluster on chromosome 2. This cytokine is thought to participate in a network of interleukin 1 family members to regulate adapted and innate immune responses. Two alternatively spliced transcript variants encoding the same protein have been reported.
Synonyms:	FIL1-theta; FIL1T; FKSG75; IL-1F10; IL-1HY2; IL1-theta; IL1HY2; MGC119831; MGC119832; MGC119833



[View online »](#)

Product images:



Western blot analysis of extracts of various cell lines, using IL1F10 antibody (TA377443) at 1:3000 dilution. | Secondary antibody: HRP Goat Anti-Rabbit IgG (H+L) at 1:10000 dilution. | Lysates/proteins: 25ug per lane. | Blocking buffer: 3% nonfat dry milk in TBST. | Detection: ECL Basic Kit . | Exposure time: 90s.