

Product datasheet for **TA377405**

IKBKE Rabbit Polyclonal Antibody

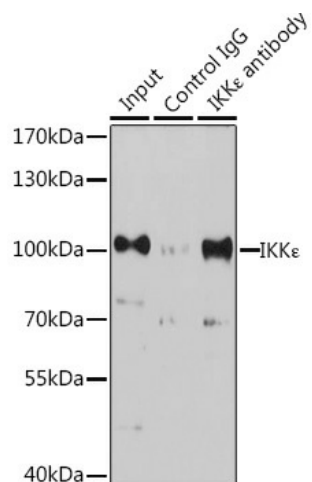
Product data:

Product Type:	Primary Antibodies
Applications:	IP, WB
Recommended Dilution:	WB,1:500 - 1:2000 IHC,1:50 - 1:200 IP,1:50 - 1:200
Reactivity:	Human, Mouse
Modifications:	Unmodified
Host:	Rabbit
Isotype:	IgG
Clonality:	Polyclonal
Immunogen:	Recombinant fusion protein containing a sequence corresponding to amino acids 460-620 of human IKK ϵ (NP_001180251.1).
Formulation:	Buffer: PBS with 0.02% sodium azide,50% glycerol,pH7.3.
Concentration:	lot specific
Purification:	Affinity purification
Conjugation:	Unconjugated
Storage:	Store at -20°C. Avoid freeze / thaw cycles.
Stability:	Shelf life: one year from despatch.
Predicted Protein Size:	70kDa/80kDa
Gene Name:	inhibitor of kappa light polypeptide gene enhancer in B-cells, kinase epsilon
Database Link:	Entrez Gene 9641 Human Q14164
Background:	IKBKE is a noncanonical I-kappa-B (see MIM 164008) kinase (IKK) that is essential for regulating antiviral signaling pathways. IKBKE has also been identified as a breast cancer (MIM 114480) oncogene and is amplified and overexpressed in over 30% of breast carcinomas and breast cancer cell lines.
Synonyms:	IKK-E; IKK-epsilon; IKK-i; IKKE; IKKI; KIAA0151; MGC125294; MGC125295; MGC125297



[View online »](#)

Product images:



Immunoprecipitation analysis of 200ug extracts of K-562 cells, using 3 ug IKKε antibody (TA377405). Western blot was performed from the immunoprecipitate using IKKε antibody (TA377405) at a dilution of 1:1000.