

## Product datasheet for **TA377382**

### IGF2R Rabbit Polyclonal Antibody

#### Product data:

Product Type:	Primary Antibodies
Applications:	ICC/IF, WB
Recommended Dilution:	WB, 1:500 - 1:2000 IF, 1:50 - 1:200
Reactivity:	Human, Mouse, Rat
Modifications:	Unmodified
Host:	Rabbit
Isotype:	IgG
Clonality:	Polyclonal
Immunogen:	Recombinant fusion protein containing a sequence corresponding to amino acids 2327-2491 of human Cation-independent M6PR (Cation-independent M6PR (IGF2R)) (NP_000867.2).
Formulation:	Buffer: PBS with 0.02% sodium azide, 50% glycerol, pH 7.3.
Concentration:	lot specific
Purification:	Affinity purification
Conjugation:	Unconjugated
Storage:	Store at -20°C. Avoid freeze / thaw cycles.
Stability:	Shelf life: one year from despatch.
Predicted Protein Size:	274kDa
Gene Name:	insulin like growth factor 2 receptor
Database Link:	<a href="#">Entrez Gene 3482 Human P11717</a>



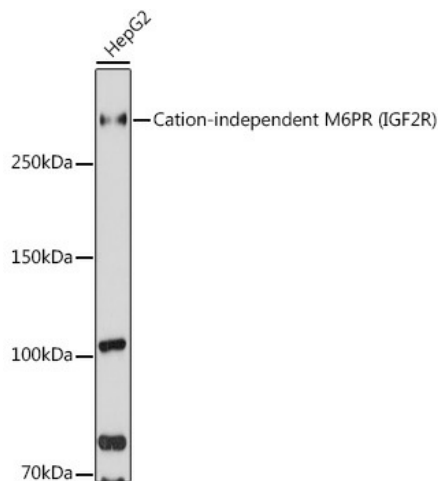
[View online »](#)

**Background:**

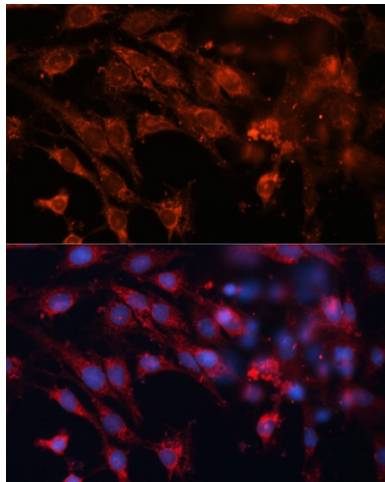
This gene encodes a receptor for both insulin-like growth factor 2 and mannose 6-phosphate. The binding sites for each ligand are located on different segments of the protein. This receptor has various functions, including in the intracellular trafficking of lysosomal enzymes, the activation of transforming growth factor beta, and the degradation of insulin-like growth factor 2. Mutation or loss of heterozygosity of this gene has been association with risk of hepatocellular carcinoma. The orthologous mouse gene is imprinted and shows exclusive expression from the maternal allele; however, imprinting of the human gene may be polymorphic, as only a minority of individuals showed biased expression from the maternal allele (PMID:8267611).

**Synonyms:**

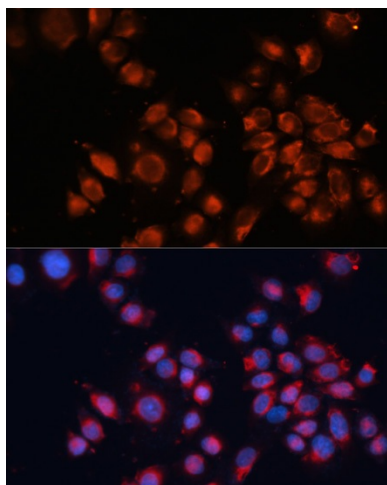
CD222; CI-MPR; CIMPR; M6P-R; M6P/IGF2R; M6PR; MPR1; MPRI

**Product images:**

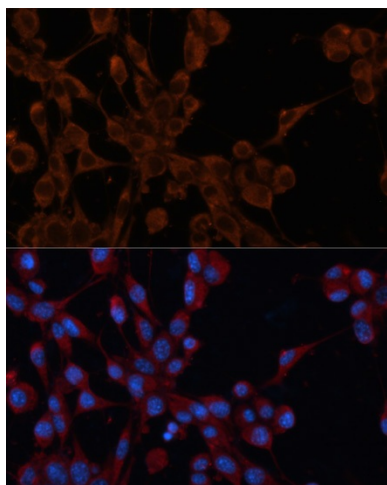
Western blot analysis of extracts of HepG2 cells, using Cation-independent M6PR (Cation-independent M6PR (IGF2R)) antibody (TA377382) at 1:1000 dilution. | Secondary antibody: HRP Goat Anti-Rabbit IgG (H+L) at 1:10000 dilution. | Lysates/proteins: 25ug per lane. | Blocking buffer: 3% nonfat dry milk in TBST. | Detection: ECL Basic Kit . | Exposure time: 60s.



Immunofluorescence analysis of C6 cells using Cation-independent M6PR (Cation-independent M6PR (IGF2R)) antibody (TA377382) at dilution of 1:100. Blue: DAPI for nuclear staining.



Immunofluorescence analysis of HeLa cells using Cation-independent M6PR (Cation-independent M6PR (IGF2R)) antibody (TA377382) at dilution of 1:100. Blue: DAPI for nuclear staining.



Immunofluorescence analysis of NIH/3T3 cells using Cation-independent M6PR (Cation-independent M6PR (IGF2R)) antibody (TA377382) at dilution of 1:100. Blue: DAPI for nuclear staining.